

**Figure 2: Public Transit Systems Operating in Northern Virginia  
Operating Statistics and Performance Indicators, FY 2010**

|                              | <a href="#">Fairfax Connector</a> | Potomac and Rappahannock Transportation Commission |                           | <a href="#">Virginia Railway Express (VRE)</a> | <a href="#">Alexandria DASH</a> | <a href="#">City of Fairfax CUE</a> | <a href="#">Arlington Transit (ART)</a> | <a href="#">Loudoun County Transit</a> | Washington Metro Area Transit Authority      |   |
|------------------------------|-----------------------------------|--|---------------------------|--|---------------------------------|-------------------------------------|---|--|--|---|
|                              |                                   | <a href="#">Omni Ride</a>                          | <a href="#">Omni Link</a> |  |                                 |                                     |   |  | <a href="#">Metrobus (Northern Virginia)</a> | <a href="#">Metrorail (Northern Virginia)</a> |
| Annual Passenger Trips       | 9,643,793                         | 2,176,322  | 1,000,027                 | 4,106,589                                      | 3,805,551                       | 932,055                             | 1,990,402                               | 967,957                                | 20,556,094                                   | 98,463,817                                    |
| Vehicle Miles                | 9,450,711                         | 2,155,742  | 809,419                   | 2,094,830                                      | 1,562,437                       | 447,232                             | 874,936                                 | 2,330,625                              | 12,841,331                                   | 23,466,873                                    |
| Passenger Miles              | 78,925,974                        | 49,837,774   | 5,230,841                 | 120,532,093                                    | 10,802,156                      | 3,879,354                           | 3,383,683                               | 32,145,456                             | 65,327,011                                   | 560,672,500                                   |
| Fleet Size                   | 249                               | 107  | 22                        | 120  | 63                              | 12                                  | 39                                      | 51                                     | 1,482  | 1,128   |
| Average Age of Fleet (years) | 6.7                               | 6.5  | 5.5                       | 20   | 8.8                             | 5.0                                 | 4.4                                     | 5                                      | 8.7  | 20  |
| Average Weekday Boardings    | 34,356                            | 8,602  | 3,701                     | 16,673   | 13,544                          | 3,331                               | 7,109                                   | 3,997                                  |  | 327,304                                       |
| Average Trip Length (miles)  | 8.18                              | 22.90  | 5.23                      | 29.35  | 2.84                            | 4.16                                | 1.70                                    | 33.21                                  | 3.18   | 5.69  |
| On Time Performance          | 93%                               | <i>Not Available</i>                               |                           | 84.4%  | 93.0%                           | 95.0%                               | 98.0%                                   | 95.0%                                  | 75.0%  | 89.2%   |
| Operating Costs              | \$98,055,099                      | \$15,243,567                                       | \$8,792,536               | \$52,594,511                                   | \$11,433,000                    | \$2,850,899                         | \$6,583,860                             | \$6,461,873                            | \$115,961,134                                | \$226,254,175                                 |

Source: Operating Information obtained directly from individual transit systems

\* Estimated based on WMATA systemwide data

\*\* WMATA systemwide data

**Figure 5: Northern Virginia Average Weekday and Annual Public Transit Passenger Trips, FY 2009 - 2010**

| <b>System</b>                          | <b>Average Weekday<br/>Passenger Trips, FY<br/>2009</b> | <b>Average Weekday<br/>Passenger Trips, FY<br/>2010</b> | <b>Annual Passenger<br/>Trips, FY 2009</b> | <b>Annual Passenger<br/>Trips, FY 2010</b> |
|--|---|---|--|--|
| <a href="#">Metrorail Virginia</a>     | 334,048   | 327,304   | 101,183,949                                | 98,463,817                                 |
| <a href="#">Metrobus Virginia</a>      | 79,061  | 72,079  | 22,125,429                                 | 20,556,094                                 |
| <a href="#">Fairfax Connector</a>      | 30,278  | 34,356  | 9,576,635                                  | 9,643,793                                  |
| <a href="#">VRE</a>                    | 15,754  | 16,673  | 3,868,035                                  | 4,106,589                                  |
| <a href="#">DASH</a>                   | 14,033  | 13,544  | 4,006,825                                  | 3,805,551                                  |
| <a href="#">PRTC Omni Ride</a>         | 8,817   | 8,602   | 2,146,441                                  | 2,176,322                                  |
| <a href="#">PRTC Omni Link</a>         | 3,821   | 3,701   | 1,025,633                                  | 1,000,027                                  |
| <a href="#">CUE</a>                    | 3,651   | 3,331   | 1,031,659                                  | 932,055                                    |
| <a href="#">ART</a>                    | 4,926   | 7,109   | 1,428,827                                  | 1,990,402                                  |
| <a href="#">Loudoun County Transit</a> | 3,614   | 3,997   | 890,011                                    | 967,957                                    |
| <b>Total</b>                           | 498,003   | 490,696   | 147,283,444                                | 143,642,607                                |

Note: Ridership on WMATA reimbursable services such as REX, PikeRide, and TAGS is included in the Metrobus Virginia ridership figure.

447232

**Figure 7: FY2009-FY2010 Metrorail Ridership Summary  
Average Daily Passenger Trips by Station**

| Station                            | Weekday<br>FY 2009 | Saturday<br>FY 2009 | Sunday<br>FY 2009 | Weekday<br>FY 2010 | Saturday<br>FY 2010 | Sunday<br>FY 2010 |
|------------------------------------|--------------------|---------------------|-------------------|--------------------|---------------------|-------------------|
| <b>Stations in Alexandria*</b>     |                    |                     |                   |                    |                     |                   |
| Blue/Yellow Line Stations          |                    |                     |                   |                    |                     |                   |
| Braddock Road                      | 8,841              | 3,881               | 2,316             | 8,497              | 3,622               | 2,202             |
| Van Dorn Street                    | 7,356              | 3,560               | 2,099             | 7,021              | 3,343               | 1,988             |
| Eisenhower Avenue                  | 4,514              | 2,393               | 1,240             | 4,488              | 2,289               | 1,246             |
| King Street                        | 18,239             | 9,493               | 6,126             | 447,232            | 9,016               | 5,965             |
| <b>Total Alexandria:</b>           | <b>38,949</b>      | <b>19,325</b>       | <b>11,781</b>     | <b>467,237</b>     | <b>18,270</b>       | <b>11,401</b>     |
| <b>Stations in Arlington</b>       |                    |                     |                   |                    |                     |                   |
| Orange Line Stations               |                    |                     |                   |                    |                     |                   |
| East Falls Church                  | 8,107              | 4,714               | 2,825             | 7,764              | 4,659               | 2,818             |
| Ballston                           | 24,179             | 11,191              | 6,459             | 23,619             | 10,839              | 6,304             |
| Virginia Square                    | 8,006              | 3,140               | 1,806             | 7,885              | 3,041               | 1,763             |
| Clarendon                          | 8,392              | 5,682               | 3,125             | 8,137              | 5,470               | 2,935             |
| Courthouse                         | 14,197             | 6,886               | 4,097             | 14,313             | 7,087               | 4,208             |
| Rosslyn                            | 33,326             | 13,299              | 8,965             | 32,903             | 13,242              | 9,362             |
| Blue/Yellow Line Stations          |                    |                     |                   |                    |                     |                   |
| Arlington Cemetery                 | 3,020              | 4,722               | 4,313             | 2,982              | 4,870               | 4,258             |
| Pentagon                           | 31,264             | 4,947               | 3,448             | 31,010             | 4,975               | 3,679             |
| Pentagon City                      | 31,827             | 23,309              | 14,247            | 31,648             | 22,688              | 13,755            |
| Crystal City                       | 28,628             | 10,837              | 6,929             | 27,844             | 10,490              | 6,729             |
| National Airport                   | 11,289             | 7,732               | 10,970            | 11,295             | 7,142               | 10,549            |
| <b>Total Arlington:</b>            | <b>202,235</b>     | <b>96,458</b>       | <b>67,184</b>     | <b>199,401</b>     | <b>94,502</b>       | <b>66,360</b>     |
| <b>Stations in Fairfax County*</b> |                    |                     |                   |                    |                     |                   |
| Orange Line Stations               |                    |                     |                   |                    |                     |                   |
| Vienna                             | 26,559             | 12,720              | 7,288             | 26,254             | 12,077              | 6,542             |
| Dunn Loring                        | 10,314             | 5,109               | 3,002             | 10,051             | 4,737               | 2,642             |
| West Falls Church                  | 20,295             | 6,209               | 4,240             | 19,953             | 5,400               | 3,423             |
| Blue/Yellow Line Stations          |                    |                     |                   |                    |                     |                   |
| Huntington                         | 16,797             | 6,695               | 4,260             | 16,379             | 6,428               | 4,083             |
| Franconia-Springfield              | 18,899             | 9,252               | 5,381             | 18,393             | 8,572               | 4,838             |
| <b>Total Fairfax:</b>              | <b>92,864</b>      | <b>39,985</b>       | <b>24,172</b>     | <b>91,030</b>      | <b>37,214</b>       | <b>21,529</b>     |
| <b>Total Virginia:</b>             | <b>334,048</b>     | <b>155,769</b>      | <b>103,136</b>    | <b>757,668</b>     | <b>149,986</b>      | <b>99,290</b>     |

\*Van Dorn Street is paid for by Alexandria and Fairfax County on a 50/50 basis

**Figure 7A: FY2009-2010 Metrorail Ridership Summary  
Average Daily Passenger Trips by Station (Weekday)**

| <b>Station</b>                     | <b>Weekday<br/>FY 2009</b> | <b>Weekday<br/>FY 2010</b> | <b>Total Change<br/>FY 09-10</b> | <b>Percentage<br/>Change<br/>FY 09-10</b> |
|------------------------------------|----------------------------|----------------------------|----------------------------------|---|
| <b>Stations in Alexandria*</b>     |                            |                            |                                  |   |
| Blue/Yellow Line Stations          |                            |                            |                                  |   |
| Braddock Road                      | 8,841                      | 8,497                      | -344                             | -4%                                       |
| Van Dorn Street                    | 7,356                      | 7,021                      | -335                             | -5%                                       |
| Eisenhower Avenue                  | 4,514                      | 4,488                      | -26                              | -1%                                       |
| King Street                        | 18,239                     | 16,868                     | -1,371                           | 44723200%                                 |
| <b>Total Alexandria:</b>           | <b>38,949</b>              | <b>36,873</b>              | <b>-2,076</b>                    | <b>-5%</b>                                |
| <b>Stations in Arlington</b>       |                            |                            |                                  |   |
| Orange Line Stations               |                            |                            |                                  |   |
| East Falls Church                  | 8,107                      | 7,764                      | -343                             | -4%                                       |
| Ballston                           | 24,179                     | 23,619                     | -559                             | -2%                                       |
| Virginia Square                    | 8,006                      | 7,885                      | -121                             | -2%                                       |
| Clarendon                          | 8,392                      | 8,137                      | -255                             | -3%                                       |
| Courthouse                         | 14,197                     | 14,313                     | 115                              | 1%  |
| Rosslyn                            | 33,326                     | 32,903                     | -423                             | -1%                                       |
| Blue/Yellow Line Stations          |                            |                            |                                  |   |
| Arlington Cemetery                 | 3,020                      | 2,982                      | -38                              | -1%                                       |
| Pentagon                           | 31,264                     | 31,010                     | -254                             | -1%                                       |
| Pentagon City                      | 31,827                     | 31,648                     | -179                             | -1%                                       |
| Crystal City                       | 28,628                     | 27,844                     | -784                             | -3%                                       |
| National Airport                   | 11,289                     | 11,295                     | 7                                | 0%  |
| <b>Total Arlington:</b>            | <b>202,235</b>             | <b>199,401</b>             | <b>-2,835</b>                    | <b>-1%</b>                                |
| <b>Stations in Fairfax County*</b> |                            |                            |                                  |   |
| Orange Line Stations               |                            |                            |                                  |   |
| Vienna                             | 26,559                     | 26,254                     | -305                             | -1%                                       |
| Dunn Loring                        | 10,314                     | 10,051                     | -263                             | -3%                                       |
| West Falls Church                  | 20,295                     | 19,953                     | -342                             | -2%                                       |
| Blue/Yellow Line Stations          |                            |                            |                                  |   |
| Huntington                         | 16,797                     | 16,379                     | -417                             | -2%                                       |
| Franconia-Springfield              | 18,899                     | 18,393                     | -506                             | -3%                                       |
| <b>Total Fairfax:</b>              | <b>92,864</b>              | <b>91,030</b>              | <b>-1,834</b>                    | <b>-2%</b>                                |
| <b>Total Virginia:</b>             | <b>334,048</b>             | <b>327,304</b>             | <b>-6,744</b>                    | <b>-2%</b>                                |

\*Van Dorn Street is paid for by Alexandria and Fairfax County on a 50/50 basis

**Figure 7B: FY2009- 2010 Metrorail Ridership Summary  
Average Daily Passenger Trips by Station (Saturday)**

| <b>Station</b>                     | <b>Saturday<br/>FY 2009</b> | <b>Saturday<br/>FY 2010</b> | <b>Total Change<br/>FY 09-10</b> | <b>Percentage<br/>Change<br/>FY 09-10</b> |
|------------------------------------|-----------------------------|-----------------------------|----------------------------------|---|
| <b>Stations in Alexandria*</b>     |                             |                             |                                  |   |
| Blue/Yellow Line Stations          |                             |                             |                                  |   |
| Braddock Road                      | 3,881                       | 3,622                       | -258                             | -7%                                       |
| Van Dorn Street                    | 3,560                       | 3,343                       | -216                             | -6%                                       |
| Eisenhower Avenue                  | 2,393                       | 2,289                       | -104                             | -4%                                       |
| King Street                        | 9,493                       | 9,016                       | -477                             | 44723200%                                 |
| <b>Total Alexandria:</b>           | <b>19,325</b>               | <b>18,270</b>               | <b>-1,056</b>                    | <b>-5%</b>                                |
| <b>Stations in Arlington</b>       |                             |                             |                                  |   |
| Orange Line Stations               |                             |                             |                                  |   |
| East Falls Church                  | 4,714                       | 4,659                       | -55                              | -1%                                       |
| Ballston                           | 11,191                      | 10,839                      | -353                             | -3%                                       |
| Virginia Square                    | 3,140                       | 3,041                       | -99                              | -3%                                       |
| Clarendon                          | 5,682                       | 5,470                       | -212                             | -4%                                       |
| Courthouse                         | 6,886                       | 7,087                       | 201                              | 3%  |
| Rosslyn                            | 13,299                      | 13,242                      | -57                              | 0%  |
| Blue/Yellow Line Stations          |                             |                             |                                  |   |
| Arlington Cemetery                 | 4,722                       | 4,870                       | 148                              | 3%  |
| Pentagon                           | 4,947                       | 4,975                       | 29                               | 1%  |
| Pentagon City                      | 23,309                      | 22,688                      | -621                             | -3%                                       |
| Crystal City                       | 10,837                      | 10,490                      | -348                             | -3%                                       |
| National Airport                   | 7,732                       | 7,142                       | -590                             | -8%                                       |
| <b>Total Arlington:</b>            | <b>96,458</b>               | <b>94,502</b>               | <b>-1,956</b>                    | <b>-2%</b>                                |
| <b>Stations in Fairfax County*</b> |                             |                             |                                  |   |
| Orange Line Stations               |                             |                             |                                  |   |
| Vienna                             | 12,720                      | 12,077                      | -644                             | -5%                                       |
| Dunn Loring                        | 5,109                       | 4,737                       | -372                             | -7%                                       |
| West Falls Church                  | 6,209                       | 5,400                       | -809                             | -13%                                      |
| Blue/Yellow Line Stations          |                             |                             |                                  |   |
| Huntington                         | 6,695                       | 6,428                       | -266                             | -4%                                       |
| Franconia-Springfield              | 9,252                       | 8,572                       | -681                             | -7%                                       |
| <b>Total Fairfax:</b>              | <b>39,985</b>               | <b>37,214</b>               | <b>-2,771</b>                    | <b>-7%</b>                                |
| <b>Total Virginia:</b>             | <b>155,769</b>              | <b>149,986</b>              | <b>-5,783</b>                    | <b>-4%</b>                                |

\*Van Dorn Street is paid for by Alexandria and Fairfax County on a 50/50 basis

**Figure 7C: FY2009 - 2010 Metrorail Ridership Summary  
Average Daily Passenger Trips by Station (Sunday)**

| Station                            | Sunday<br>FY 2009 | Sunday<br>FY 2010 | Total Change<br>FY 09-10 | Percentage<br>Change<br>FY 09-10 |
|------------------------------------|-------------------|-------------------|--------------------------|----------------------------------|
| <b>Stations in Alexandria*</b>     |                   |                   |                          |                                  |
| Blue/Yellow Line Stations          |                   |                   |                          |                                  |
| Braddock Road                      | 2,316             | 2,202             | -114                     | -5%                              |
| Van Dorn Street                    | 2,099             | 1,988             | -111                     | -5%                              |
| Eisenhower Avenue                  | 1,240             | 1,246             | 6                        | 1%                               |
| King Street                        | 6,126             | 5,965             | -161                     | 44723200%                        |
| <b>Total Alexandria:</b>           | <b>11,781</b>     | <b>11,401</b>     | <b>-380</b>              | <b>-3%</b>                       |
| <b>Stations in Arlington</b>       |                   |                   |                          |                                  |
| Orange Line Stations               |                   |                   |                          |                                  |
| East Falls Church                  | 2,825             | 2,818             | -7                       | 0%                               |
| Ballston                           | 6,459             | 6,304             | -154                     | -2%                              |
| Virginia Square                    | 1,806             | 1,763             | -43                      | -2%                              |
| Clarendon                          | 3,125             | 2,935             | -190                     | -6%                              |
| Courthouse                         | 4,097             | 4,208             | 111                      | 3%                               |
| Rosslyn                            | 8,965             | 9,362             | 397                      | 4%                               |
| Blue/Yellow Line Stations          |                   |                   |                          |                                  |
| Arlington Cemetery                 | 4,313             | 4,258             | -55                      | -1%                              |
| Pentagon                           | 3,448             | 3,679             | 231                      | 7%                               |
| Pentagon City                      | 14,247            | 13,755            | -492                     | -3%                              |
| Crystal City                       | 6,929             | 6,729             | -200                     | -3%                              |
| National Airport                   | 10,970            | 10,549            | -421                     | -4%                              |
| <b>Total Arlington:</b>            | <b>67,184</b>     | <b>66,360</b>     | <b>-824</b>              | <b>-1%</b>                       |
| <b>Stations in Fairfax County*</b> |                   |                   |                          |                                  |
| Orange Line Stations               |                   |                   |                          |                                  |
| Vienna                             | 7,288             | 6,542             | -746                     | -10%                             |
| Dunn Loring                        | 3,002             | 2,642             | -360                     | -12%                             |
| West Falls Church                  | 4,240             | 3,423             | -817                     | -19%                             |
| Blue/Yellow Line Stations          |                   |                   |                          |                                  |
| Huntington                         | 4,260             | 4,083             | -178                     | -4%                              |
| Franconia-Springfield              | 5,381             | 4,838             | -543                     | -10%                             |
| <b>Total Fairfax:</b>              | <b>24,172</b>     | <b>21,529</b>     | <b>-2,643</b>            | <b>-11%</b>                      |
| <b>Total Virginia:</b>             | <b>103,136</b>    | <b>99,290</b>     | <b>-3,846</b>            | <b>-4%</b>                       |

\*Van Dorn Street is paid for by Alexandria and Fairfax County on a 50/50 basis

**Figure 8: FY2008 - 2009 Metrorail Ridership Summary  
Annual Passenger Trips by Station**

| <b>Station</b>                     | <b>Weekday<br/>FY 2009</b> | <b>Saturday<br/>FY 2009</b> | <b>Sunday<br/>FY 2009</b> | <b>Weekday<br/>FY 2010</b> | <b>Saturday<br/>FY 2010</b> | <b>Sunday<br/>FY 2010</b> |
|------------------------------------|----------------------------|-----------------------------|---------------------------|----------------------------|-----------------------------|---------------------------|
| <b>Stations in Alexandria*</b>     |                            |                             |                           |                            |                             |                           |
| Blue/Yellow Line Stations          |                            |                             |                           |                            |                             |                           |
| Braddock Road                      | 2,308,130                  | 201,395                     | 120,151                   | 2,221,249                  | 187,810                     | 113,846                   |
| Van Dorn Street                    | 1,921,739                  | 184,598                     | 108,835                   | 1,836,318                  | 173,024                     | 102,352                   |
| Eisenhower Avenue                  | 1,178,641                  | 124,039                     | 64,463                    | 447,232                    | 118,928                     | 64,361                    |
| King Street                        | 4,764,892                  | 491,999                     | 318,713                   | 4,412,213                  | 466,936                     | 307,850                   |
| <b>Total Alexandria:</b>           | <b>10,173,402</b>          | <b>1,002,031</b>            | <b>612,162</b>            | <b>8,917,012</b>           | <b>946,698</b>              | <b>588,408</b>            |
| <b>Stations in Arlington</b>       |                            |                             |                           |                            |                             |                           |
| Orange Line Stations               |                            |                             |                           |                            |                             |                           |
| East Falls Church                  | 2,116,861                  | 244,665                     | 146,325                   | 2,030,051                  | 240,577                     | 145,908                   |
| Ballston                           | 6,311,539                  | 580,443                     | 335,087                   | 6,170,629                  | 561,555                     | 325,745                   |
| Virginia Square                    | 2,089,345                  | 162,969                     | 93,590                    | 2,059,542                  | 157,280                     | 90,884                    |
| Clarendon                          | 2,190,729                  | 295,183                     | 162,096                   | 2,125,610                  | 283,975                     | 151,920                   |
| Courthouse                         | 3,705,430                  | 357,483                     | 212,157                   | 3,738,370                  | 367,009                     | 216,542                   |
| Rosslyn                            | 8,700,032                  | 688,932                     | 463,257                   | 8,597,699                  | 684,555                     | 478,982                   |
| Blue/Yellow Line Stations          |                            |                             |                           |                            |                             |                           |
| Arlington Cemetery                 | 793,616                    | 243,468                     | 222,104                   | 785,547                    | 250,336                     | 219,354                   |
| Pentagon                           | 8,161,289                  | 256,529                     | 176,877                   | 8,101,401                  | 256,485                     | 187,017                   |
| Pentagon City                      | 8,314,751                  | 1,209,576                   | 739,677                   | 8,280,512                  | 1,178,140                   | 712,173                   |
| Crystal City                       | 7,474,900                  | 559,775                     | 358,733                   | 7,277,995                  | 544,067                     | 346,379                   |
| National Airport                   | 2,949,834                  | 403,013                     | 570,847                   | 2,956,186                  | 371,577                     | 550,747                   |
| <b>Total Arlington:</b>            | <b>52,808,325</b>          | <b>5,002,035</b>            | <b>3,480,750</b>          | <b>52,123,542</b>          | <b>4,895,557</b>            | <b>3,425,649</b>          |
| <b>Stations in Fairfax County*</b> |                            |                             |                           |                            |                             |                           |
| Orange Line Stations               |                            |                             |                           |                            |                             |                           |
| Vienna                             | 6,934,080                  | 660,072                     | 377,992                   | 6,867,724                  | 622,416                     | 336,966                   |
| Dunn Loring                        | 2,693,857                  | 264,671                     | 155,671                   | 2,629,375                  | 244,378                     | 135,886                   |
| West Falls Church                  | 5,299,690                  | 350,278                     | 221,768                   | 5,218,375                  | 280,050                     | 176,339                   |
| Blue/Yellow Line Stations          |                            |                             |                           |                            |                             |                           |
| Huntington                         | 4,385,050                  | 347,518                     | 221,213                   | 4,282,746                  | 332,304                     | 211,527                   |
| Franconia-Springfield              | 4,937,079                  | 479,825                     | 278,582                   | 4,811,048                  | 441,630                     | 249,800                   |
| <b>Total Fairfax:</b>              | <b>24,249,756</b>          | <b>2,102,364</b>            | <b>1,255,225</b>          | <b>23,809,268</b>          | <b>1,920,779</b>            | <b>1,110,518</b>          |
| <b>TOTAL VIRGINIA:</b>             | <b>87,231,483</b>          | <b>8,106,430</b>            | <b>5,348,137</b>          | <b>84,849,822</b>          | <b>7,763,033</b>            | <b>5,124,575</b>          |

\*Van Dorn Street is paid for by Alexandria and Fairfax County on a 50/50 basis

**Figure 8A: FY2009 - 2010 Metrorail Ridership Summary  
Annual Passenger Trips by Station (Weekday)**

| <b>Station</b>                     | <b>Weekday<br/>FY 2009</b> | <b>Weekday<br/>FY 2010</b> | <b>Total Change<br/>FY 09-10</b> | <b>Percentage<br/>Change<br/>FY 09-10</b> |
|------------------------------------|----------------------------|----------------------------|----------------------------------|---|
| <b>Stations in Alexandria*</b>     |                            |                            |                                  |   |
| Blue/Yellow Line Stations          |                            |                            |                                  |   |
| Braddock Road                      | 2,308,130                  | 2,221,249                  | -86,881                          | -4%                                       |
| Van Dorn Street                    | 1,921,739                  | 1,836,318                  | -85,421                          | -4%                                       |
| Eisenhower Avenue                  | 1,178,641                  | 1,173,619                  | -5,023                           | 0%  |
| King Street                        | 4,764,892                  | 4,412,213                  | -352,679                         | 44723200%                                 |
| <b>Total Alexandria:</b>           | <b>10,173,402</b>          | <b>9,643,399</b>           | <b>-530,004</b>                  | <b>-5%</b>                                |
| <b>Stations in Arlington</b>       |                            |                            |                                  |   |
| Orange Line Stations               |                            |                            |                                  |   |
| East Falls Church                  | 2,116,861                  | 2,030,051                  | -86,810                          | -4%                                       |
| Ballston                           | 6,311,539                  | 6,170,629                  | -140,910                         | -2%                                       |
| Virginia Square                    | 2,089,345                  | 2,059,542                  | -29,804                          | -1%                                       |
| Clarendon                          | 2,190,729                  | 2,125,610                  | -65,119                          | -3%                                       |
| Courthouse                         | 3,705,430                  | 3,738,370                  | 32,940                           | 1%  |
| Rosslyn                            | 8,700,032                  | 8,597,699                  | -102,333                         | -1%                                       |
| Blue/Yellow Line Stations          |                            |                            |                                  |   |
| Arlington Cemetery                 | 793,616                    | 785,547                    | -8,069                           | -1%                                       |
| Pentagon                           | 8,161,289                  | 8,101,401                  | -59,887                          | -1%                                       |
| Pentagon City                      | 8,314,751                  | 8,280,512                  | -34,238                          | 0%  |
| Crystal City                       | 7,474,900                  | 7,277,995                  | -196,904                         | -3%                                       |
| National Airport                   | 2,949,834                  | 2,956,186                  | 6,352                            | 0%  |
| <b>Total Arlington:</b>            | <b>52,808,325</b>          | <b>52,123,542</b>          | <b>-684,783</b>                  | <b>-1%</b>                                |
| <b>Stations in Fairfax County*</b> |                            |                            |                                  |   |
| Orange Line Stations               |                            |                            |                                  |   |
| Vienna                             | 6,934,080                  | 6,867,724                  | -66,356                          | -1%                                       |
| Dunn Loring                        | 2,693,857                  | 2,629,375                  | -64,482                          | -2%                                       |
| West Falls Church                  | 5,299,690                  | 5,218,375                  | -81,315                          | -2%                                       |
| Blue/Yellow Line Stations          |                            |                            |                                  |   |
| Huntington                         | 4,385,050                  | 4,282,746                  | -102,304                         | -2%                                       |
| Franconia-Springfield              | 4,937,079                  | 4,811,048                  | -126,031                         | -3%                                       |
| <b>Total Fairfax:</b>              | <b>24,249,756</b>          | <b>23,809,268</b>          | <b>-440,488</b>                  | <b>-2%</b>                                |
| <b>Total Virginia:</b>             | <b>87,231,483</b>          | <b>85,576,208</b>          | <b>-1,655,275</b>                | <b>-2%</b>                                |

\*Van Dorn Street is paid for by Alexandria and Fairfax County on a 50/50 basis

**Figure 8B: FY2009 - 2010 Metrorail Ridership Summary  
Annual Passenger Trips by Station (Saturday)**

| <b>Station</b>                     | <b>Saturday<br/>FY 2009</b> | <b>Saturday<br/>FY 2010</b> | <b>Total Change<br/>FY 09-10</b> | <b>Percentage<br/>Change<br/>FY 09-10</b> |
|------------------------------------|-----------------------------|-----------------------------|----------------------------------|---|
| <b>Stations in Alexandria*</b>     |                             |                             |                                  |   |
| Blue/Yellow Line Stations          |                             |                             |                                  |   |
| Braddock Road                      | 201,395                     | 187,810                     | -13,585                          | -7%                                       |
| Van Dorn Street                    | 184,598                     | 173,024                     | -11,574                          | -6%                                       |
| Eisenhower Avenue                  | 124,039                     | 118,928                     | -5,111                           | -4%                                       |
| King Street                        | 491,999                     | 466,936                     | -25,063                          | 44723200%                                 |
| <b>Total Alexandria:</b>           | <b>1,002,031</b>            | <b>946,698</b>              | <b>-55,333</b>                   | <b>-6%</b>                                |
| <b>Stations in Arlington</b>       |                             |                             |                                  |   |
| Orange Line Stations               |                             |                             |                                  |   |
| East Falls Church                  | 244,665                     | 240,577                     | -4,087                           | -2%                                       |
| Ballston                           | 580,443                     | 561,555                     | -18,888                          | -3%                                       |
| Virginia Square                    | 162,969                     | 157,280                     | -5,689                           | -3%                                       |
| Clarendon                          | 295,183                     | 283,975                     | -11,207                          | -4%                                       |
| Courthouse                         | 357,483                     | 367,009                     | 9,527                            | 3%  |
| Rosslyn                            | 688,932                     | 684,555                     | -4,377                           | -1%                                       |
| Blue/Yellow Line Stations          |                             |                             |                                  |   |
| Arlington Cemetery                 | 243,468                     | 250,336                     | 6,868                            | 3%  |
| Pentagon                           | 256,529                     | 256,485                     | -44                              | 0%  |
| Pentagon City                      | 1,209,576                   | 1,178,140                   | -31,436                          | -3%                                       |
| Crystal City                       | 559,775                     | 544,067                     | -15,707                          | -3%                                       |
| National Airport                   | 403,013                     | 371,577                     | -31,436                          | -8%                                       |
| <b>Total Arlington:</b>            | <b>5,002,035</b>            | <b>4,895,557</b>            | <b>-106,478</b>                  | <b>-2%</b>                                |
| <b>Stations in Fairfax County*</b> |                             |                             |                                  |   |
| Orange Line Stations               |                             |                             |                                  |   |
| Vienna                             | 660,072                     | 622,416                     | -37,655                          | -6%                                       |
| Dunn Loring                        | 264,671                     | 244,378                     | -20,292                          | -8%                                       |
| West Falls Church                  | 350,278                     | 280,050                     | -70,228                          | -20%                                      |
| Blue/Yellow Line Stations          |                             |                             |                                  |   |
| Huntington                         | 347,518                     | 332,304                     | -15,214                          | -4%                                       |
| Franconia-Springfield              | 479,825                     | 441,630                     | -38,195                          | -8%                                       |
| <b>Total Fairfax:</b>              | <b>2,102,364</b>            | <b>1,920,779</b>            | <b>-181,585</b>                  | <b>-9%</b>                                |
| <b>Total Virginia:</b>             | <b>8,106,430</b>            | <b>7,763,033</b>            | <b>-343,396</b>                  | <b>-4%</b>                                |

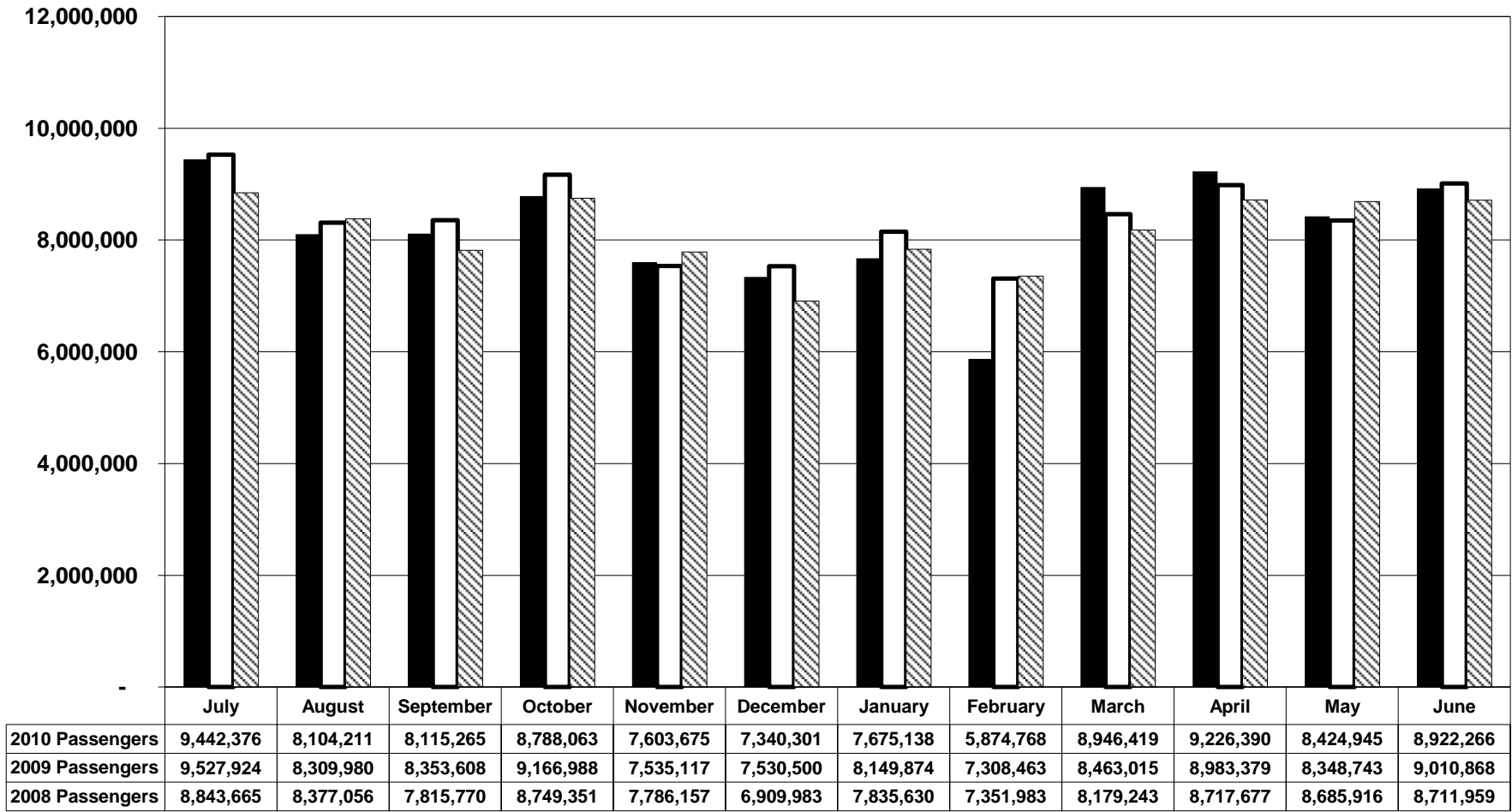
\*Van Dorn Street is paid for by Alexandria and Fairfax County on a 50/50 basis

**Figure 8C: FY2009 - 2010 Metrorail Ridership Summary  
Annual Passenger Trips by Station (Sunday)**

| <b>Station</b>                     | <b>Sunday<br/>FY 2009</b> | <b>Sunday<br/>FY 2010</b> | <b>Total Change<br/>FY 09-10</b> | <b>Percentage<br/>Change<br/>FY 09-10</b> |
|------------------------------------|---------------------------|---------------------------|----------------------------------|---|
| <b>Stations in Alexandria*</b>     |                           |                           |                                  |   |
| Blue/Yellow Line Stations          |                           |                           |                                  |   |
| Braddock Road                      | 120,151                   | 113,846                   | -6,306                           | -5%                                       |
| Van Dorn Street                    | 108,835                   | 102,352                   | -6,482                           | -6%                                       |
| Eisenhower Avenue                  | 64,463                    | 64,361                    | -102                             | 0%  |
| King Street                        | 318,713                   | 307,850                   | -10,863                          | 44723200%                                 |
| <b>Total Alexandria:</b>           | <b>612,162</b>            | <b>588,408</b>            | <b>-23,753</b>                   | <b>-4%</b>                                |
| <b>Stations in Arlington</b>       |                           |                           |                                  |   |
| Orange Line Stations               |                           |                           |                                  |   |
| East Falls Church                  | 146,325                   | 145,908                   | -417                             | 0%  |
| Ballston                           | 335,087                   | 325,745                   | -9,342                           | -3%                                       |
| Virginia Square                    | 93,590                    | 90,884                    | -2,706                           | -3%                                       |
| Clarendon                          | 162,096                   | 151,920                   | -10,176                          | -6%                                       |
| Courthouse                         | 212,157                   | 216,542                   | 4,385                            | 2%  |
| Rosslyn                            | 463,257                   | 478,982                   | 15,725                           | 3%  |
| Blue/Yellow Line Stations          |                           |                           |                                  |   |
| Arlington Cemetery                 | 222,104                   | 219,354                   | -2,750                           | -1%                                       |
| Pentagon                           | 176,877                   | 187,017                   | 10,139                           | 6%  |
| Pentagon City                      | 739,677                   | 712,173                   | -27,504                          | -4%                                       |
| Crystal City                       | 358,733                   | 346,379                   | -12,354                          | -3%                                       |
| National Airport                   | 570,847                   | 550,747                   | -20,100                          | -4%                                       |
| <b>Total Arlington:</b>            | <b>3,480,750</b>          | <b>3,425,649</b>          | <b>-55,101</b>                   | <b>-2%</b>                                |
| <b>Stations in Fairfax County*</b> |                           |                           |                                  |   |
| Orange Line Stations               |                           |                           |                                  |   |
| Vienna                             | 377,992                   | 336,966                   | -41,026                          | -11%                                      |
| Dunn Loring                        | 155,671                   | 135,886                   | -19,785                          | -13%                                      |
| West Falls Church                  | 221,768                   | 176,339                   | -45,428                          | -20%                                      |
| Blue/Yellow Line Stations          |                           |                           |                                  |   |
| Huntington                         | 221,213                   | 211,527                   | -9,686                           | -4%                                       |
| Franconia-Springfield              | 278,582                   | 249,800                   | -28,782                          | -10%                                      |
| <b>Total Fairfax:</b>              | <b>1,255,225</b>          | <b>1,110,518</b>          | <b>-144,707</b>                  | <b>-12%</b>                               |
| <b>Total Virginia:</b>             | <b>5,348,137</b>          | <b>5,124,575</b>          | <b>-223,562</b>                  | <b>-4%</b>                                |

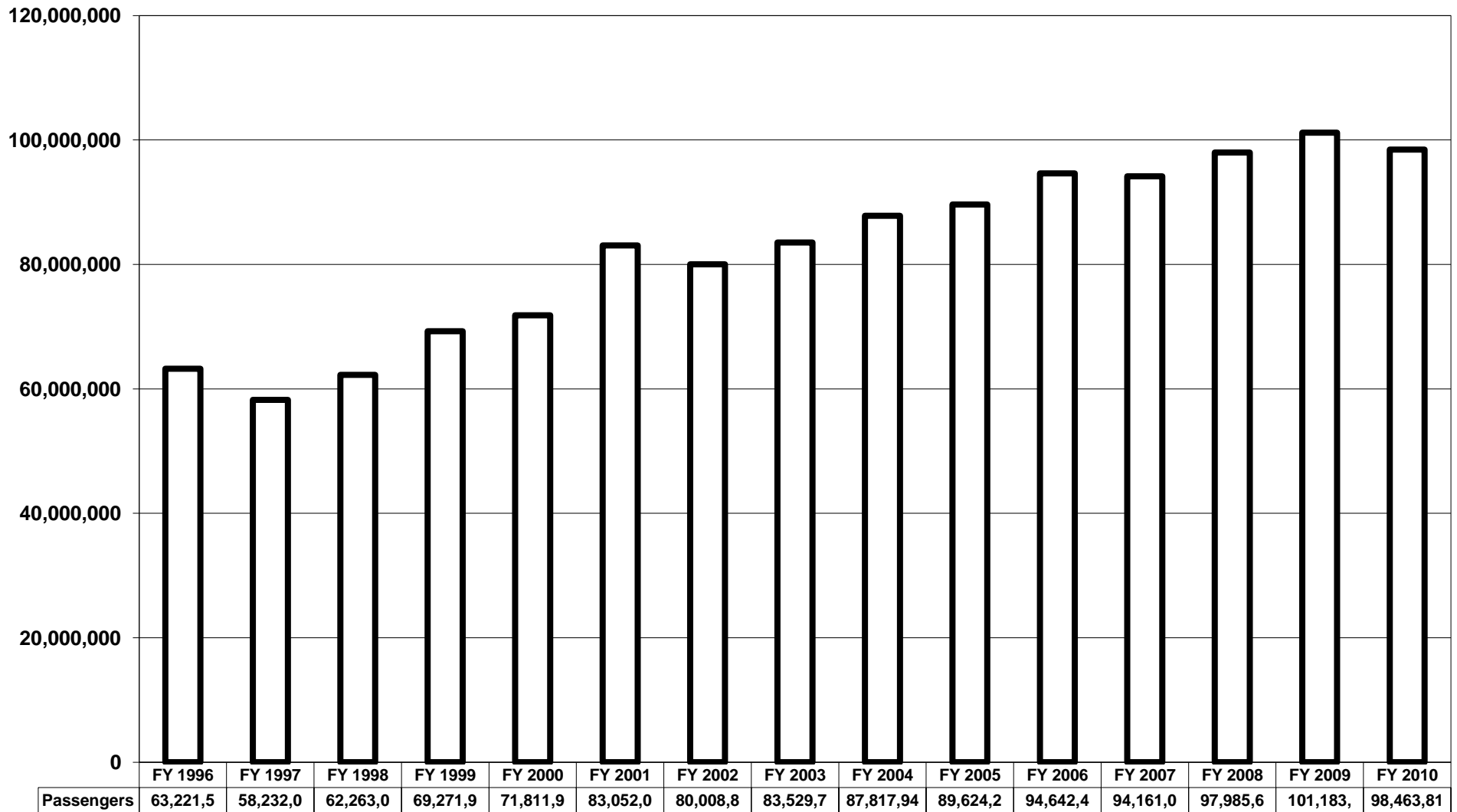
\*Van Dorn Street is paid for by Alexandria and Fairfax County on a 50/50 basis

**Figure 9: Metrorail Monthly Northern Virginia Passenger Trips, FY2008 - FY2010**

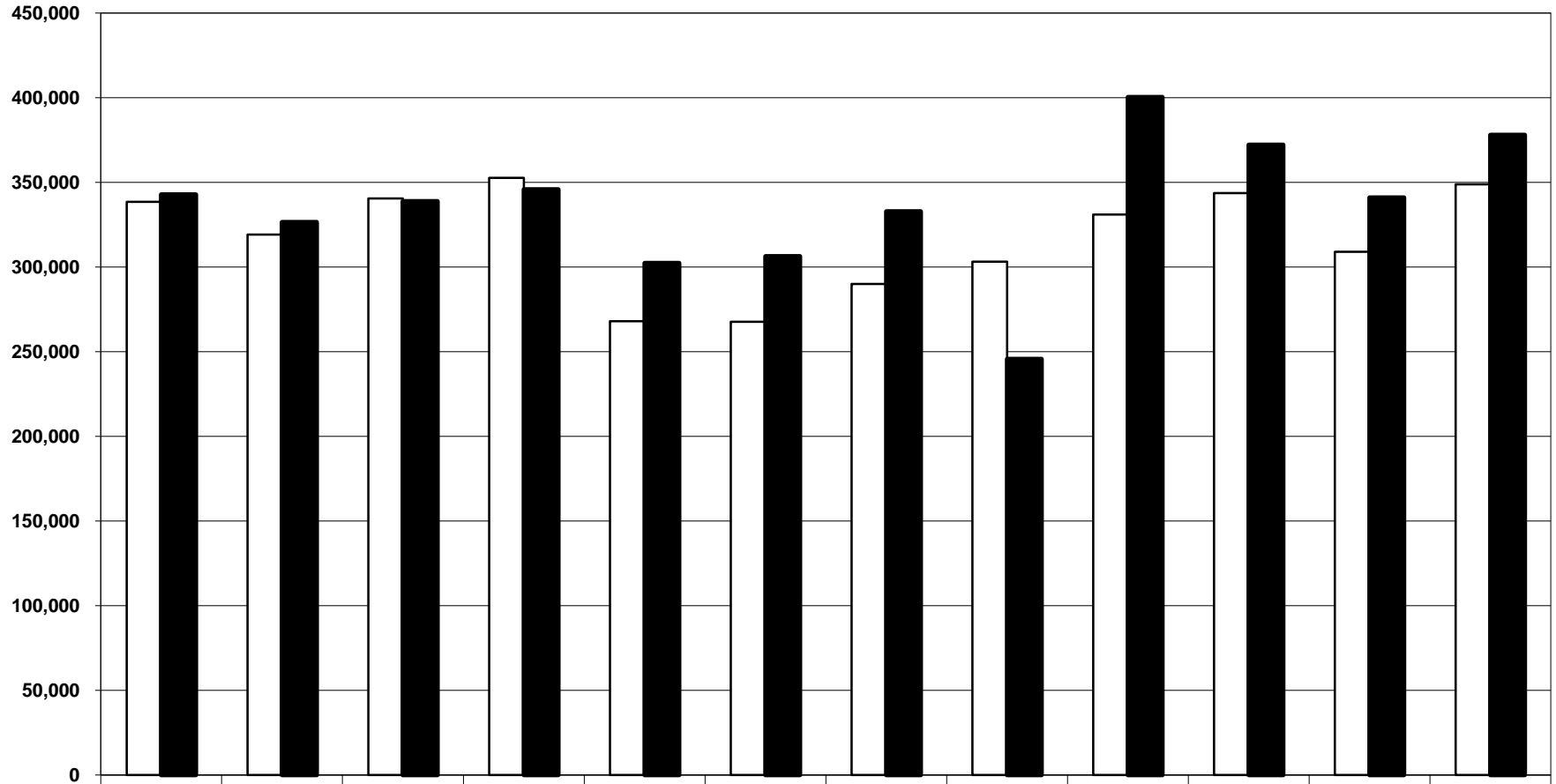


■ 2010 Passengers    □ 2009 Passengers    ▨ 2008 Passengers

**Figure 10: Metrorail Annual Northern Virginia Passenger Trips, FY 1996 - 2010**



**Figure 12: VRE Monthly Passenger Trips, FY 2009 - 2010**



|                    | July    | August  | September | October | November | December | January | February | March   | April   | May     | June    |
|--------------------|---------|---------|-----------|---------|----------|----------|---------|----------|---------|---------|---------|---------|
| FY 2009 Passengers | 338,591 | 319,222 | 340,516   | 352,652 | 268,071  | 267,618  | 289,997 | 303,116  | 331,002 | 343,696 | 309,040 | 348,826 |
| FY 2010 Passengers | 342,930 | 326,594 | 338,791   | 345,883 | 302,371  | 306,319  | 332,868 | 245,765  | 400,309 | 372,232 | 341,086 | 378,082 |

FY 2009 Passengers
  FY 2010 Passengers

**Figure 13: VRE Annual Passenger Trips, FY 1994 - FY 2010**

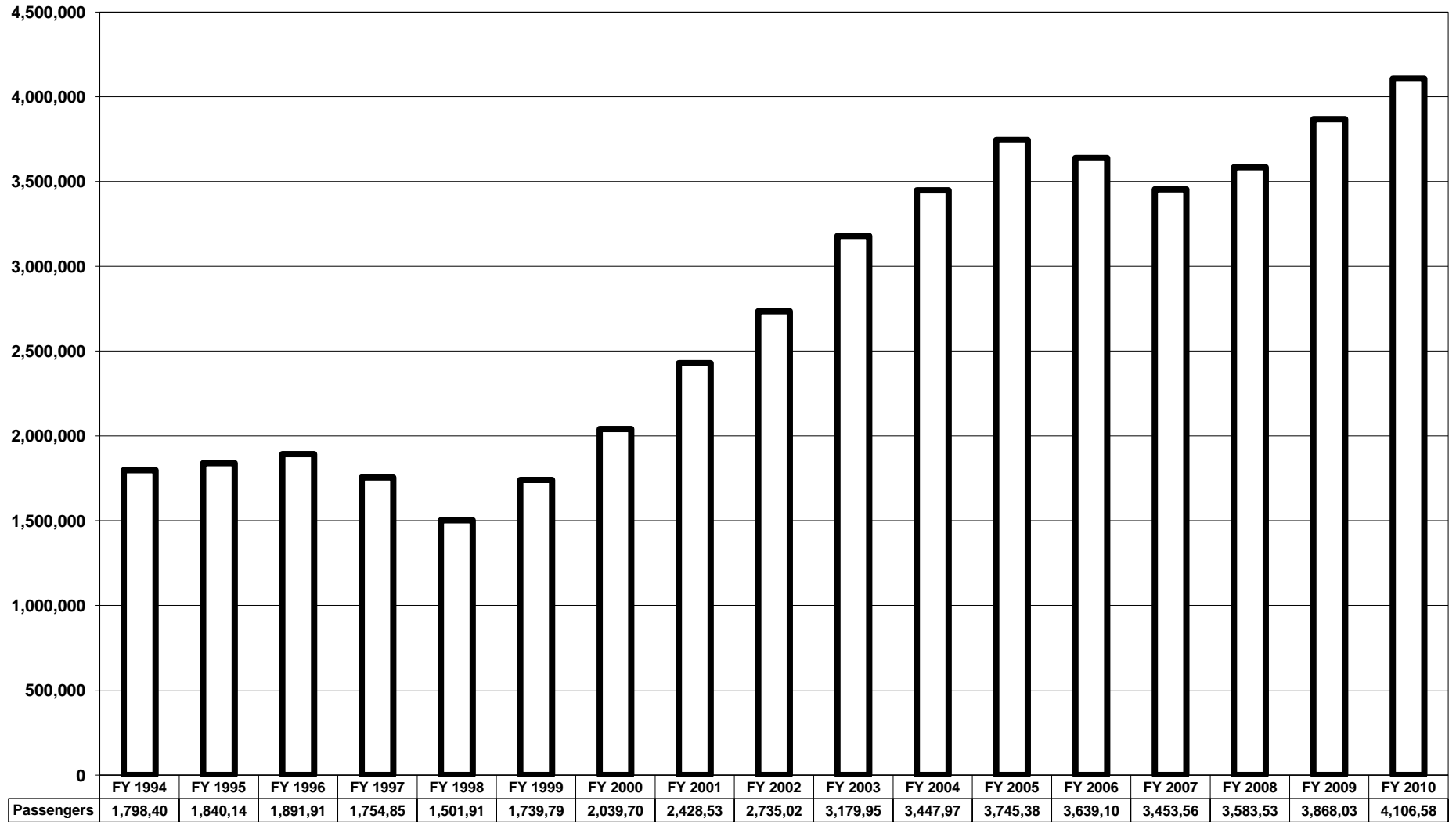


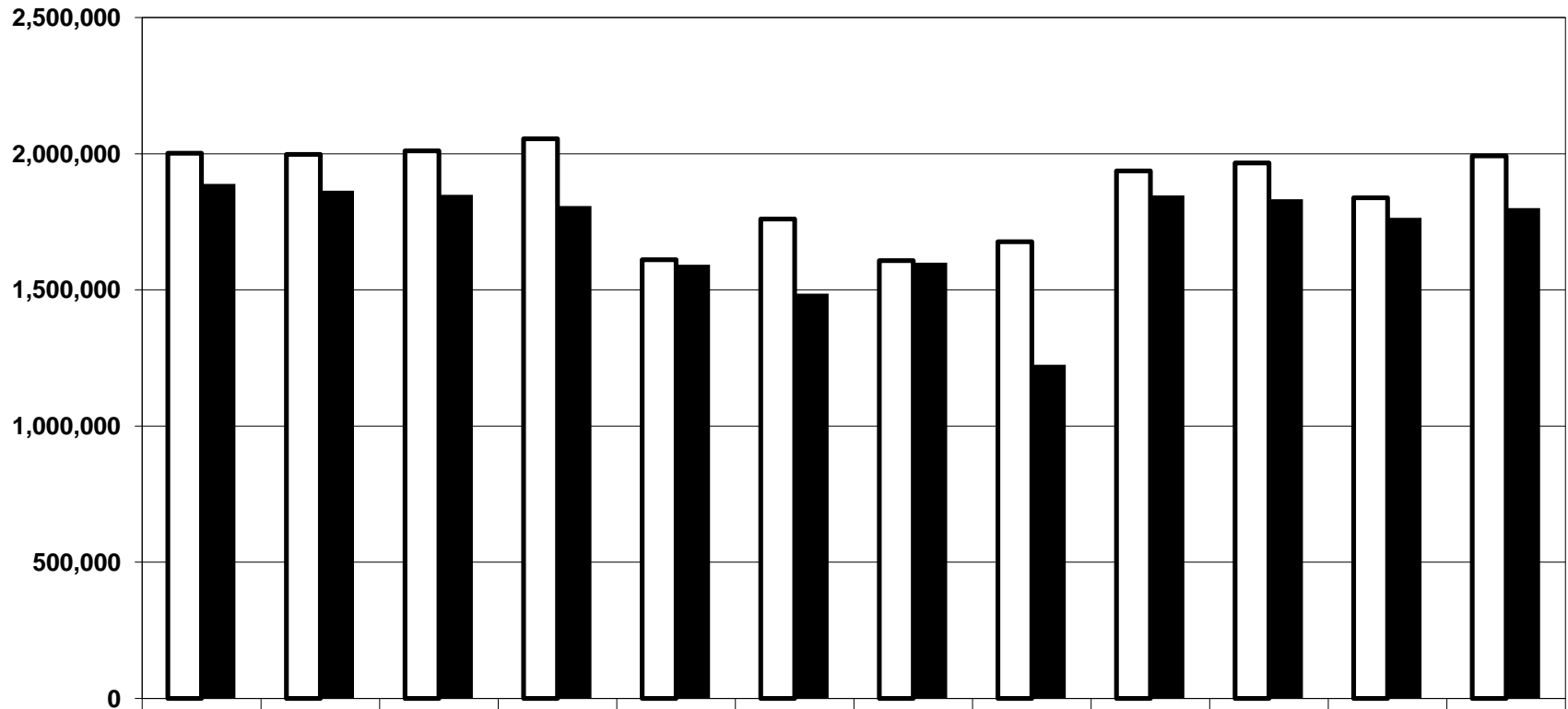
Figure 15: Northern Virginia Metrobus Average Daily Passenger Trips, FY 2009 - FY 2010

|                                   | Weekday<br>FY 09 | Saturday<br>FY 09 | Sunday<br>FY 09 | Weekday<br>FY 10 | Saturday<br>FY 10   | Sunday<br>FY 10 |
|-----------------------------------|------------------|-------------------|-----------------|------------------|---------------------|-----------------|
| <b>Ballston Terminal Services</b> |                  |                   |                 |                  |                     |                 |
| 1B,B/C,D,E,F,F/Z,Z/               | 5,055            | 3,021             | 2,108           | 4,852            | 2,843               | 1,892           |
| 2A,B,B/C,G                        | 3,693            | 1,993             | 720             | 3,435            | 1,811               | 690             |
| 10B,B/C,D                         | 2,718            | 1,822             | 1,092           | 2,454            | 1,702               | 447,232         |
| 22A,B,B/F                         | 2,312            | 674               |                 | 1,609            | 509                 |                 |
| 23A,B,C,C/T,T/                    | 3,927            | 2,453             | 1,535           | 3,561            | 2,163               | 1,374           |
| 24M,P                             | 850              |                   |                 | 835              |                     |                 |
| 25A,A/F,F/G,J,P,P/R               | 1,443            | 364               | 387             | 1,391            | 388                 | 325             |
| 25B                               | 1,406            | 682               |                 | 1,362            | 549                 |                 |
| 38B                               | 2,841            | 1,543             | 882             | 3,608            | 1,810               | 1,278           |
| Subtotal                          | 24,244           | 12,552            | 6,724           | 23,108           | 11,775              | 452,792         |
| <b>Rosslyn Terminal Services</b>  |                  |                   |                 |                  |                     |                 |
| 3A,B,C,E,F                        | 2,581            | 1,003             | 972             | 2,447            | 882                 | 620             |
| 4A,B,E,H,S                        | 2,428            | 742               | 475             | 2,113            | 698                 | 408             |
| Subtotal                          | 5,009            | 1,745             | 1,448           | 4,560            | 1,579               | 1,028           |
| <b>Pentagon Terminal Services</b> |                  |                   |                 |                  |                     |                 |
| 7A,A/C,E,F,H,P,W,X                | 4,686            | 1,619             | 1,167           | 4,544            | 1,466               | 1,158           |
| 8S,W,X,Z                          | 1,250            |                   |                 | 1,196            |                     |                 |
| 9A,B,C,C/E                        | 1,739            | 1,051             | 745             | 1,606            | 974                 | 677             |
| 10A,A/E                           | 2,479            | 1,730             | 920             | 2,418            | 1,486               | 856             |
| 13A,B,F,G,M                       | 857              | 144               | 171             | 823              | 110                 | 92              |
| 16A,B,B/C,D,E,F,J                 | 6,904            | 4,741             | 2,637           | 6,694            | 4,286               | 2,662           |
| 16L                               | 215              |                   |                 | 223              |                     |                 |
| 16G,H,K,W                         | 4,108            | 2,579             | 1,532           | 3,908            | 2,438               | 1,444           |
| 17 Series                         | 1,590            |                   |                 | 1,454            |                     |                 |
| 18 Series                         | 1,679            |                   |                 | 1,569            |                     |                 |
| 21A,B,C,D,F                       | 733              |                   |                 | 534              |                     |                 |
| 28F,G                             | 787              |                   |                 | 750              |                     |                 |
| 29C,E,H,X                         | 1,064            |                   |                 | 1,044            |                     |                 |
| Subtotal                          | 28,092           | 11,864            | 7,172           | 26,764           | 10,760              | 6,888           |
| <b>Other Terminal Services</b>    |                  |                   |                 |                  |                     |                 |
| 2W                                | 219              |                   |                 |                  | <i>Discontinued</i> |                 |
| REX                               | 3,790            | 2,165             | 910             | 3,627            | 1,889               | 756             |
| 11Y                               | 392              |                   |                 | 410              |                     |                 |
| 12 Series                         | 2,144            |                   |                 |                  | <i>Discontinued</i> |                 |
| 15K,L                             | 531              |                   |                 | 436              |                     |                 |
| 15M                               |                  |                   |                 | 144              |                     |                 |
| 20 Series                         | 431              |                   |                 |                  | <i>Discontinued</i> |                 |
| 24T                               | 190              |                   |                 | 178              |                     |                 |
| TAGS Shuttle                      | 729              |                   |                 | 753              |                     |                 |
| 28A,B,B/                          | 5,317            | 3,490             | 2,800           | 4,880            | 3,436               | 2,737           |
| 29K,N,N/                          | 2,128            | 1,119             |                 | 2,184            | 1,035               |                 |
| 2T                                | 896              | 559               | 247             | 815              | 515                 | 301             |
| 3T                                | 1,054            | 336               |                 | 783              | 319                 |                 |
| 3Y                                | 399              |                   |                 | 328              |                     |                 |
| 9S                                | 1,343            |                   |                 | 1,361            |                     |                 |
| 16Y                               | 1,233            |                   |                 | 1,185            |                     |                 |
| 28T                               | 629              |                   |                 | 564              |                     |                 |
| Subtotal                          | 21,715           | 7,668             | 3,956           | 17,648           | 7,194               | 3,794           |
| <b>Metrobus Total-Virginia</b>    | <b>79,061</b>    | <b>33,829</b>     | <b>19,300</b>   | <b>72,079</b>    | <b>31,309</b>       | <b>464,501</b>  |

**Figure 16: Northern Virginia Metrobus Annual Passenger Trips, FY 2009 - FY 2010**

|                                   | <b>Weekday<br/>FY 09</b> | <b>Saturday<br/>FY 09</b> | <b>Sunday<br/>FY 09</b> | <b>Weekday<br/>FY 10</b> | <b>Saturday<br/>FY 10</b> | <b>Sunday<br/>FY 10</b> |
|-----------------------------------|--------------------------|---------------------------|-------------------------|--------------------------|---------------------------|-------------------------|
| <b>Ballston Terminal Services</b> |                          |                           |                         |                          |                           |                         |
| 1B,B/C,D,E,F,F/Z,Z/               | 1,261,339                | 157,005                   | 109,501                 | 1,232,474                | 147,835                   | 105,288                 |
| 2A,B,B/C,G                        | 919,797                  | 103,871                   | 37,199                  | 872,543                  | 94,173                    | 37,964                  |
| 10B,B/C,D                         | 678,209                  | 94,817                    | 56,707                  | 620,917                  | 88,509                    | 447,232                 |
| 22A,B,B/F                         | 574,313                  | 35,062                    |                         | 407,124                  | 26,464                    |                         |
| 23A,B,C,C/T,T/                    | 978,835                  | 127,436                   | 79,499                  | 900,973                  | 112,482                   | 75,584                  |
| 24M,P                             | 211,699                  |                           |                         | 50,943                   |                           |                         |
| 25A,A/F,F/G,J,P,R                 | 359,223                  | 18,836                    | 20,067                  | 350,407                  | 20,162                    | 17,874                  |
| 25B                               | 350,725                  | 35,527                    |                         | 343,202                  | 28,568                    |                         |
| 38B                               | 682,048                  | 80,251                    | 45,876                  | 912,870                  | 94,129                    | 70,295                  |
| Subtotal                          | 6,016,188                | 652,805                   | 348,849                 | 5,691,453                | 612,322                   | 754,237                 |
| <b>Rosslyn Terminal Services</b>  |                          |                           |                         |                          |                           |                         |
| 3A,B,C,E,F                        | 643,711                  | 52,100                    | 50,533                  | 619,008                  | 45,840                    | 34,706                  |
| 4A,B,E,H,S                        | 604,528                  | 38,568                    | 24,567                  | 534,693                  | 36,286                    | 22,838                  |
| Subtotal                          | 1,248,239                | 90,668                    | 75,100                  | 1,153,701                | 82,126                    | 57,544                  |
| <b>Pentagon Terminal Services</b> |                          |                           |                         |                          |                           |                         |
| 7A,A/C,E,F,H,P,W,X                | 1,166,597                | 84,201                    | 60,642                  | 1,154,253                | 76,251                    | 63,692                  |
| 8S,W,X,Z                          | 310,815                  |                           |                         | 301,411                  |                           |                         |
| 9A,B,C,C/E                        | 433,644                  | 54,678                    | 38,736                  | 406,407                  | 50,656                    | 37,220                  |
| 10A,A/E                           | 616,917                  | 89,777                    | 47,883                  | 611,662                  | 77,250                    | 47,937                  |
| 13A,B,F,G,M                       | 213,718                  | 7,398                     | 8,994                   | 207,370                  | 5,164                     | 4,577                   |
| 16A,B,B/C,D,E,F,J                 | 1,721,573                | 246,951                   | 137,028                 | 1,700,308                | 222,880                   | 149,091                 |
| 16L                               | 53,283                   |                           |                         | 55,851                   |                           |                         |
| 16G,H,K,W                         | 1,023,455                | 133,966                   | 79,446                  | 992,559                  | 126,781                   | 80,836                  |
| 17 Series                         | 396,024                  |                           |                         | 367,606                  |                           |                         |
| 18 Series                         | 417,796                  |                           |                         | 395,893                  |                           |                         |
| 21A,B,C,D,F                       | 182,521                  |                           |                         | 133,952                  |                           |                         |
| 28F,G                             | 195,945                  |                           |                         | 189,122                  |                           |                         |
| 29C,E,H,X                         | 265,064                  |                           |                         | 263,108                  |                           |                         |
| Subtotal                          | 6,997,352                | 616,971                   | 372,729                 | 6,779,502                | 558,982                   | 383,353                 |
| <b>Other Terminal Services</b>    |                          |                           |                         |                          |                           |                         |
| 2W                                | 53,883                   |                           |                         |                          | <i>Discontinued</i>       |                         |
| REX                               | 944,912                  | 112,470                   | 47,262                  | 917,675                  | 98,232                    | 41,587                  |
| 11Y                               | 97,586                   |                           |                         | 102,915                  |                           |                         |
| 12 Series                         | 529,666                  |                           |                         |                          | <i>Discontinued</i>       |                         |
| 15K,L                             | 132,427                  |                           |                         | 110,346                  |                           |                         |
| 15M                               |                          |                           |                         | 36,117                   |                           |                         |
| 20 Series                         | 106,442                  |                           |                         |                          | <i>Discontinued</i>       |                         |
| 24T                               | 47,279                   |                           |                         | 44,390                   |                           |                         |
| TAGS Shuttle                      | 181,843                  |                           |                         | 189,727                  |                           |                         |
| 28A,B,B/                          | 1,326,171                | 181,499                   | 145,713                 | 1,239,510                | 178,690                   | 153,261                 |
| 29K,N,N/                          | 530,613                  | 58,135                    |                         | 552,557                  | 53,795                    |                         |
| 2T                                | 223,105                  | 28,901                    | 12,779                  | 207,017                  | 26,789                    | 16,556                  |
| 3T                                | 262,431                  | 17,421                    |                         | 197,366                  | 16,573                    |                         |
| 3Y                                | 99,373                   |                           |                         | 82,706                   |                           |                         |
| 9S                                | 333,988                  |                           |                         | 342,949                  |                           |                         |
| 16Y                               | 307,011                  |                           |                         | 299,684                  |                           |                         |
| 28T                               | 156,961                  |                           |                         | 141,625                  |                           |                         |
| Subtotal                          | 5,333,691                | 398,426                   | 205,754                 | 4,464,584                | 374,079                   | 211,404                 |
| <b>Metrobus Total-Virginia</b>    | <b>19,595,470</b>        | <b>1,758,870</b>          | <b>1,002,432</b>        | <b>18,089,240</b>        | <b>1,627,509</b>          | <b>1,406,538</b>        |

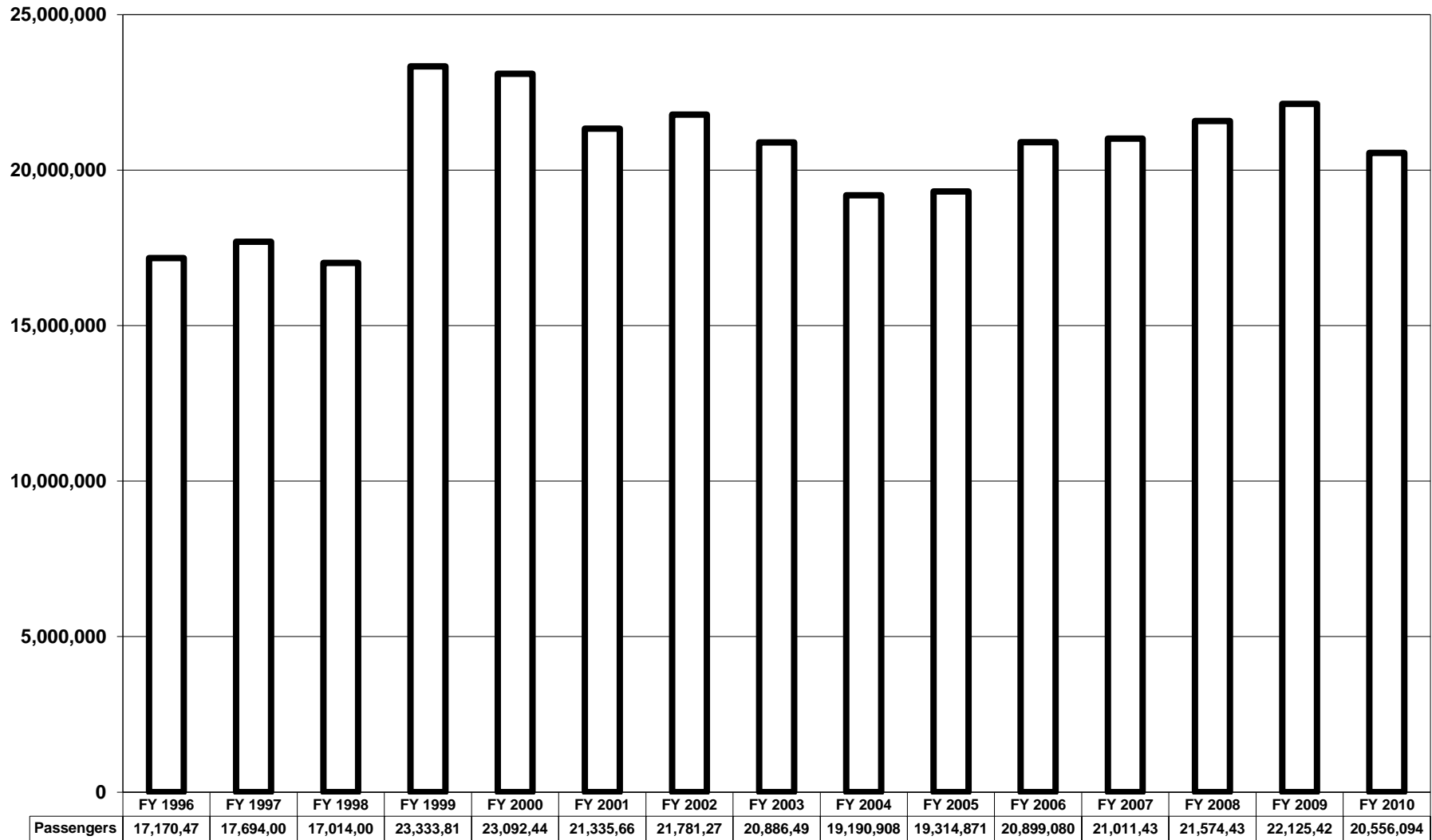
**Figure 17: Metrobus Northern Virginia Passenger Trips  
Monthly Totals, FY2009 - 2010**



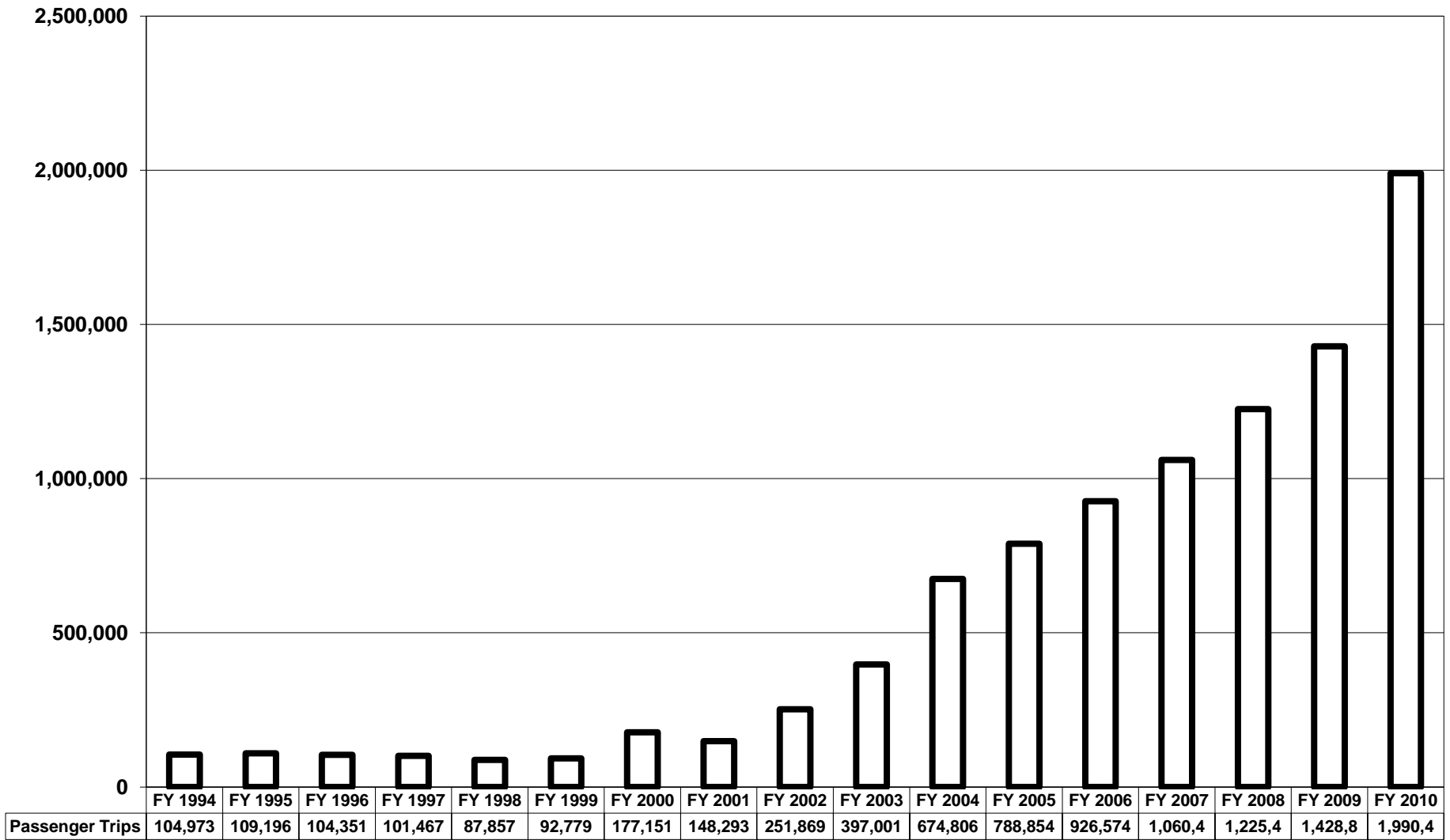
|                    | July      | August    | September | October   | November  | December  | January   | February  | March     | April     | May       | June      |
|--------------------|-----------|-----------|-----------|-----------|-----------|-----------|-----------|-----------|-----------|-----------|-----------|-----------|
| FY 2009 Passengers | 2,001,532 | 1,997,314 | 2,009,997 | 2,054,820 | 1,611,106 | 1,760,237 | 1,607,519 | 1,676,972 | 1,936,650 | 1,966,113 | 1,838,106 | 1,992,483 |
| FY 2010 Passengers | 1,889,137 | 1,863,762 | 1,848,888 | 1,807,933 | 1,591,935 | 1,486,209 | 1,599,826 | 1,225,503 | 1,846,949 | 1,832,207 | 1,763,950 | 1,799,795 |

FY 2009 Passengers
     
 
 FY 2010 Passengers

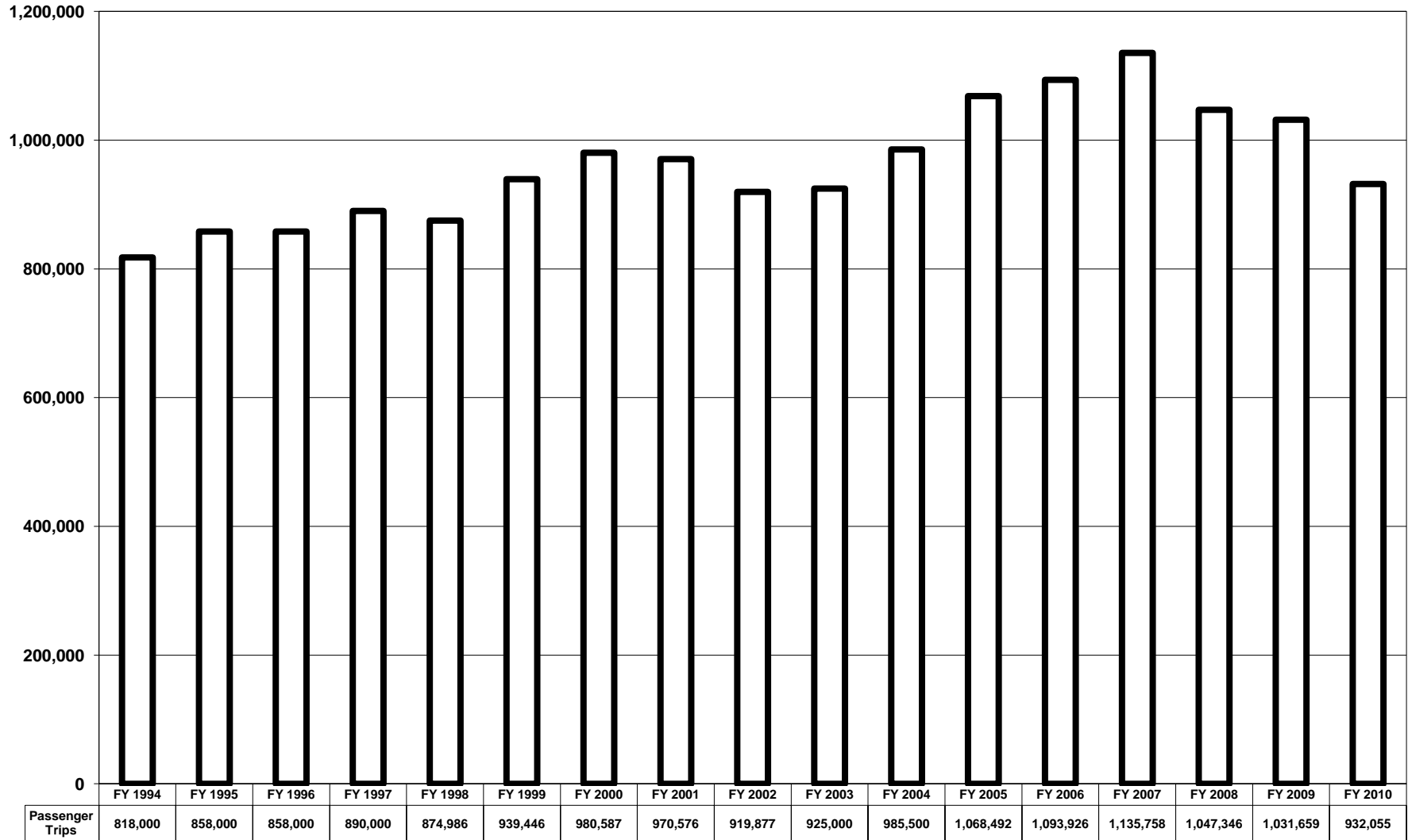
**Figure 18: Metrobus Northern Virginia Annual Passenger Trips,  
FY 1996 - FY 2010**



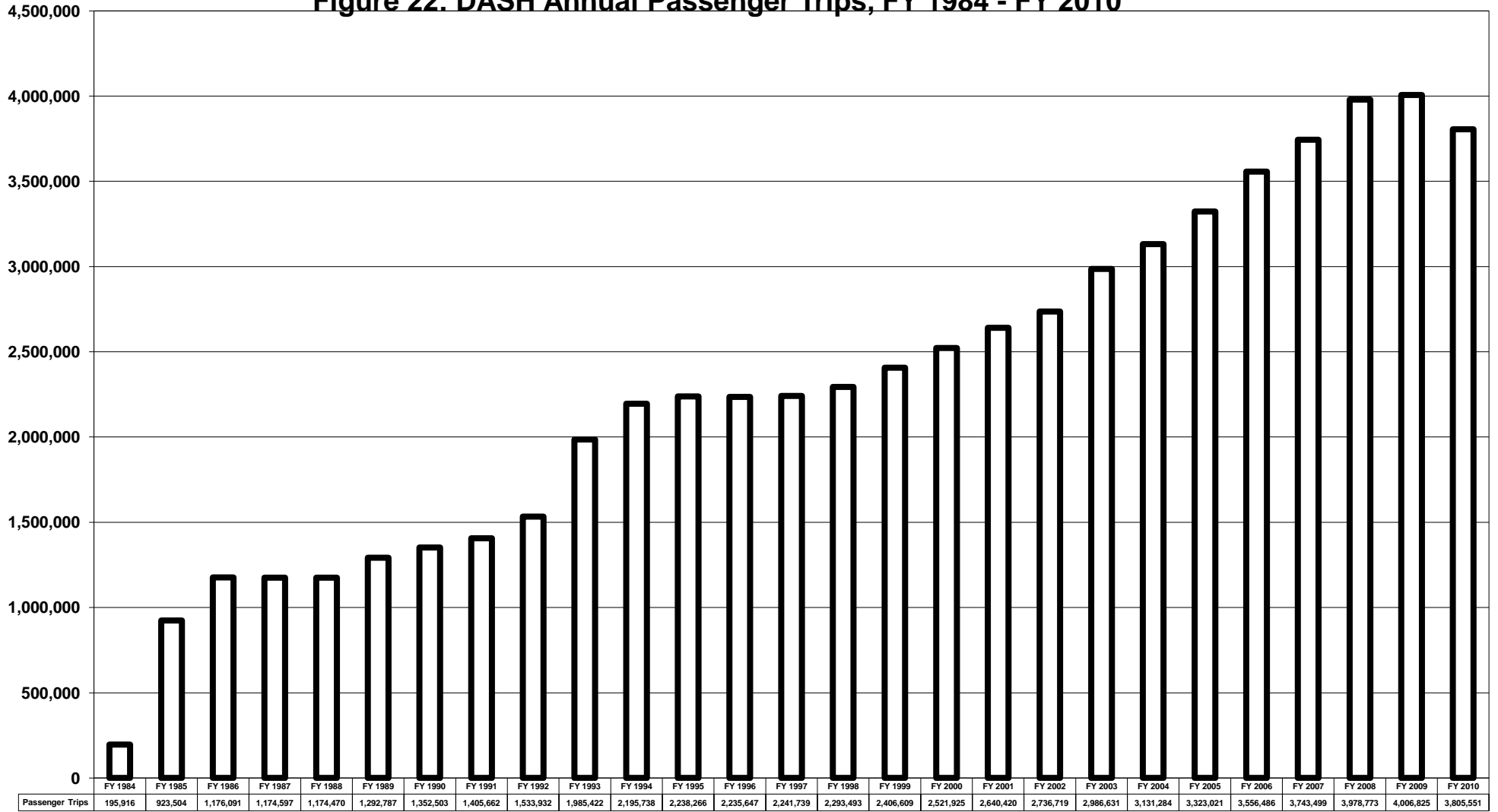
**Figure 20: ART Annual Passenger Trips, FY 1994 - FY 2010**



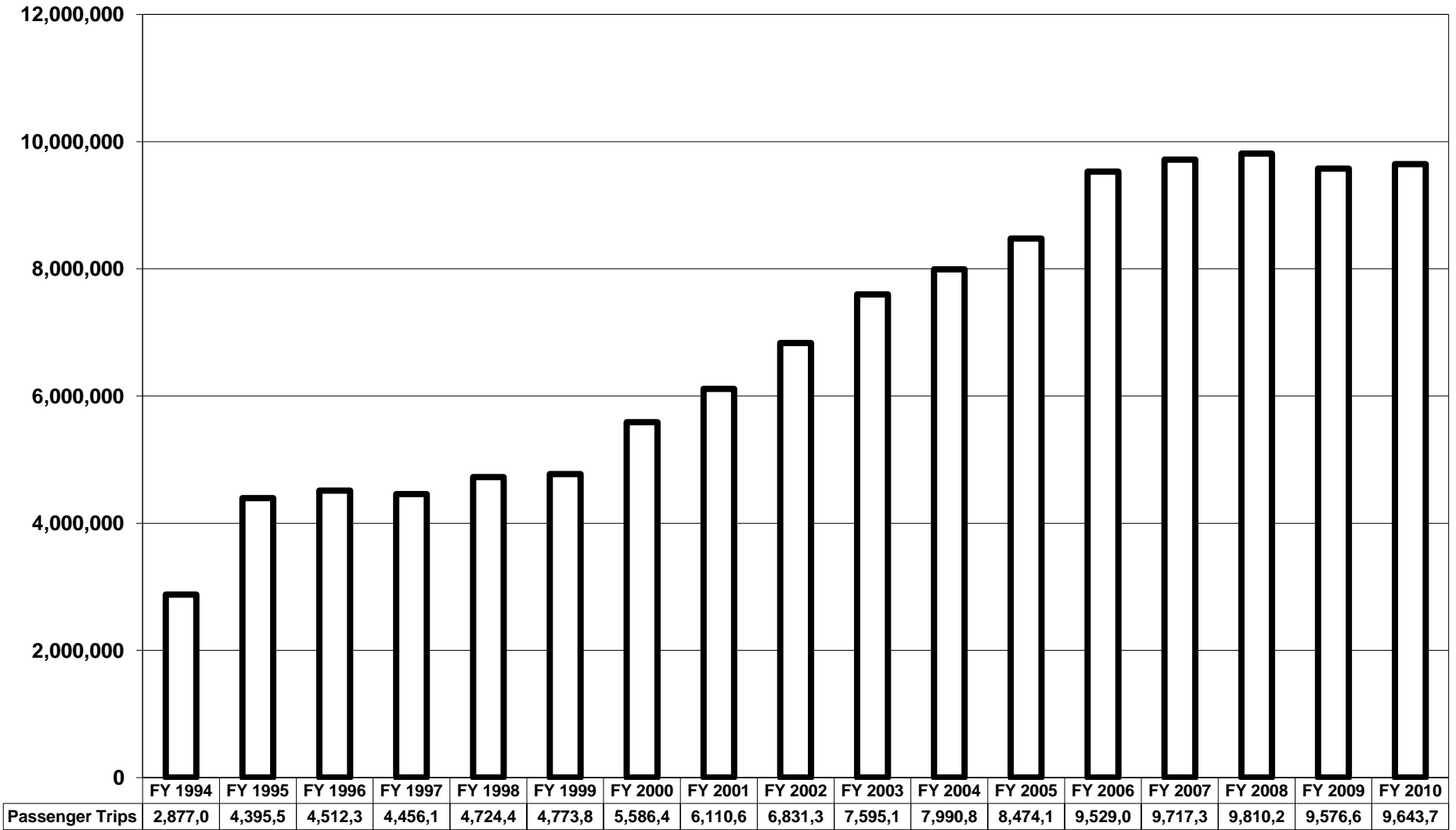
**Figure 21: CUE Annual Passenger Trips, FY 1994 - FY 2010**



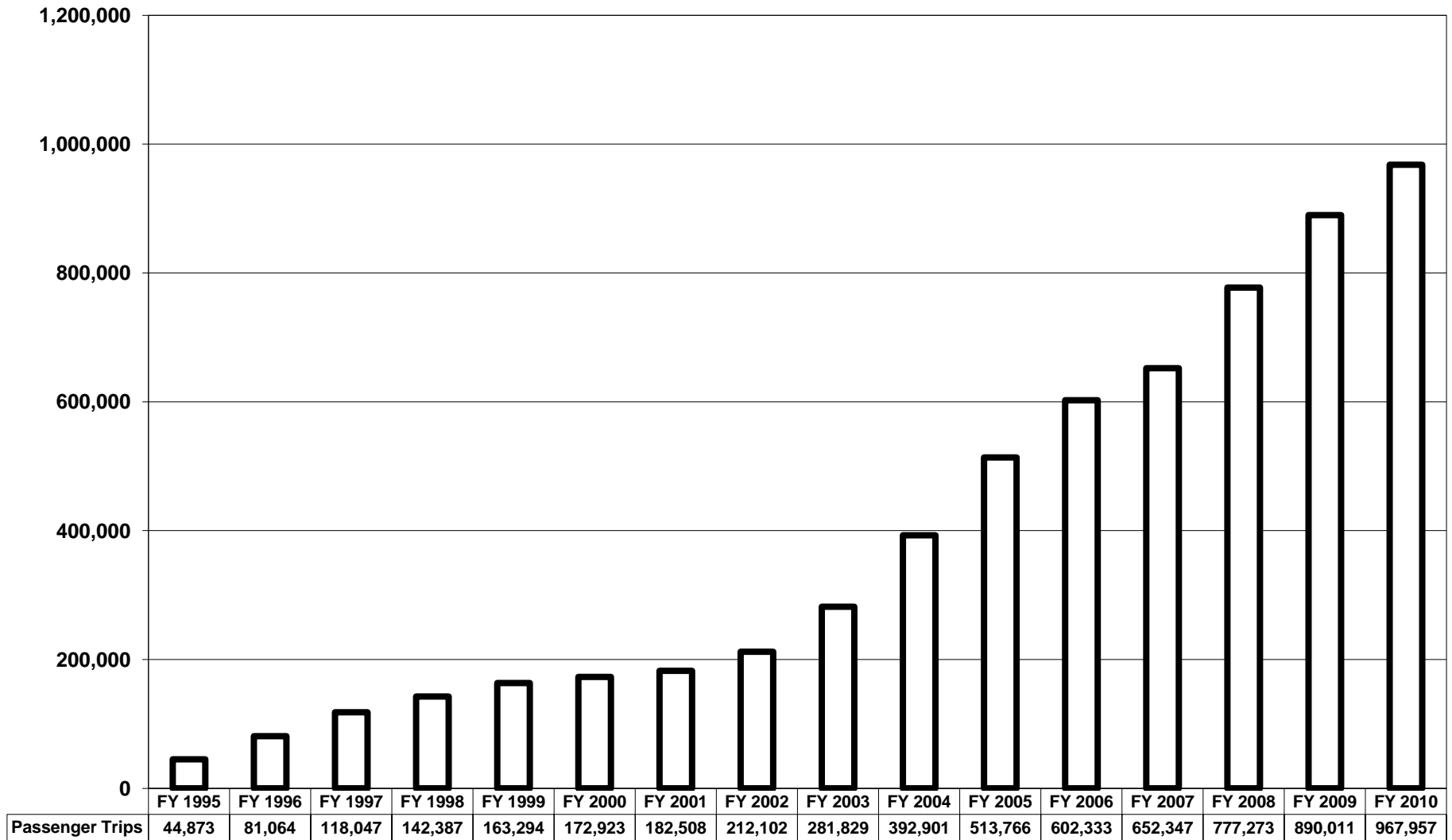
**Figure 22: DASH Annual Passenger Trips, FY 1984 - FY 2010**



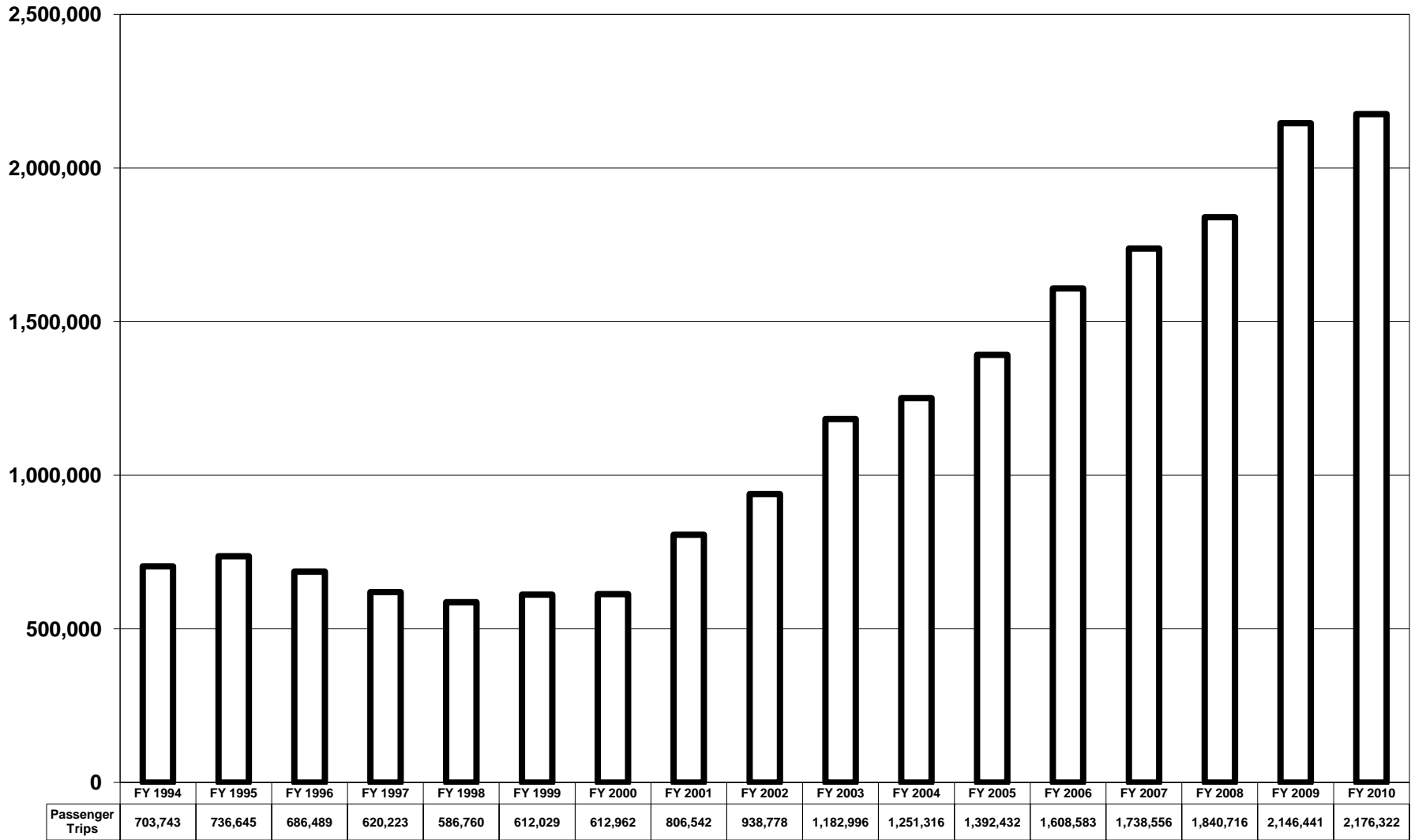
**Figure 24: Fairfax Connector Annual Passenger Trips, FY 1994 - FY 2010**



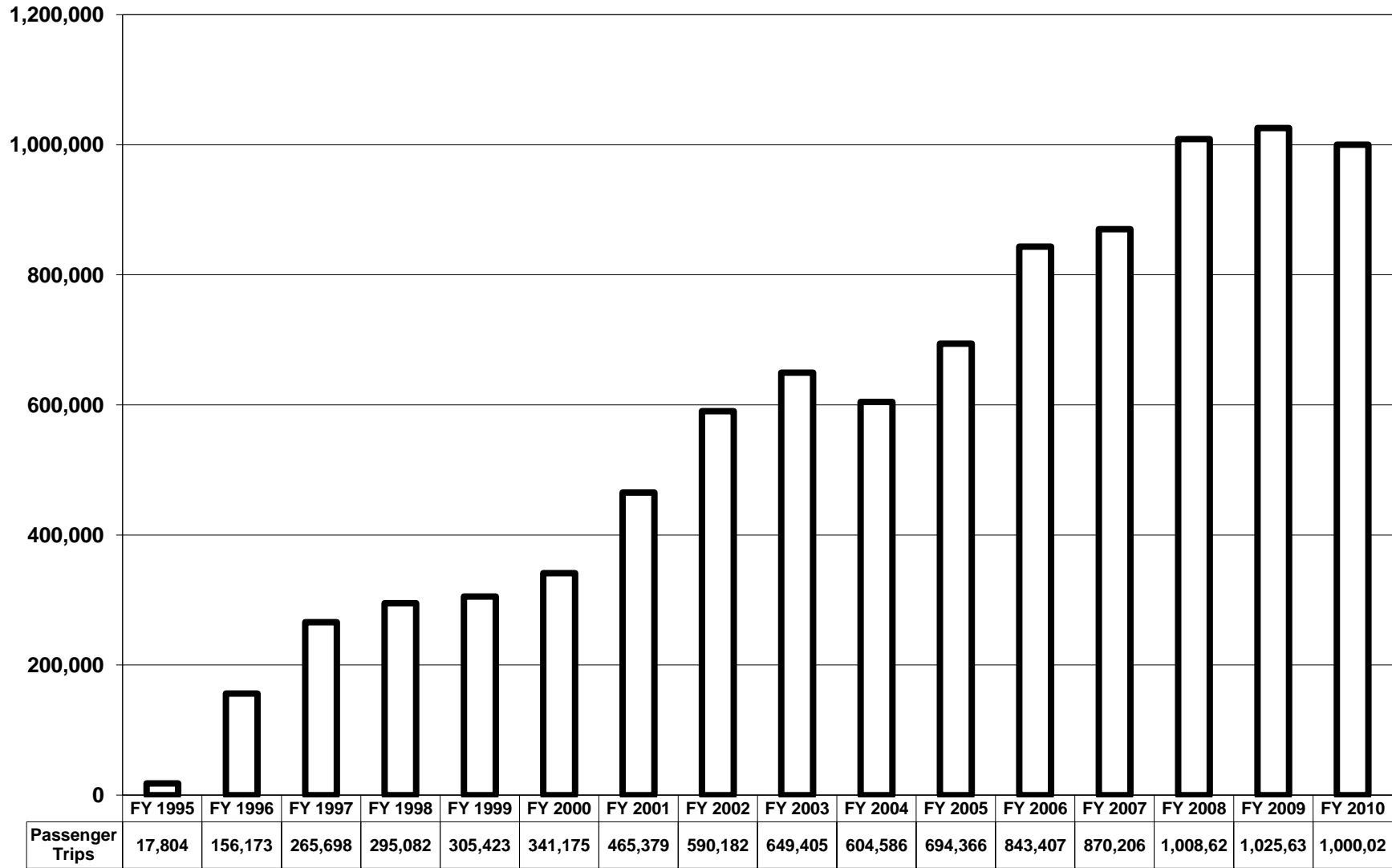
**Figure 25: Loudoun County Transit Annual Passenger Trips, FY 1995 - FY 2010**



**Figure 26: PRTC Omni Ride Annual Passenger Trips, FY 1994 - FY 2010**



**Figure 27: PRTC Omni Link Annual Passenger Trips, FY 1995 - FY 2010**



| Metrorail Monthly | July      | August    | September | October   | November  |
|-------------------|-----------|-----------|-----------|-----------|-----------|
| 2010 Passengers   | 9,442,376 | 8,104,211 | 8,115,265 | 8,788,063 | 7,603,675 |
| 2009 Passengers   | 9,527,924 | 8,309,980 | 8,353,608 | 9,166,988 | 7,535,117 |
| 2008 Passengers   | 8,843,665 | 8,377,056 | 7,815,770 | 8,749,351 | 7,786,157 |
| 2007 Passengers   | 8,519,553 | 8,138,286 | 7,639,932 | 8,088,936 | 7,437,807 |
| 2006 Passengers   | 8,475,840 | 8,006,065 | 8,065,853 | 8,072,948 | 7,527,842 |
| 2005 Passengers   | 7,712,688 | 7,327,240 | 7,475,729 | 7,756,445 | 7,078,386 |
| 2004 Passengers   | 8,166,820 | 7,036,287 | 7,234,555 | 7,971,149 | 6,715,881 |
| 2003 Passengers   | 7,675,334 | 7,034,762 | 6,796,487 | 7,492,176 | 6,573,596 |
| 2002 Passengers   | 7,518,887 | 7,430,756 | 6,154,681 | 6,679,526 | 6,056,130 |

| December  | January   | February  | March     | April     | May       | June      |
|-----------|-----------|-----------|-----------|-----------|-----------|-----------|
| 7,340,301 | 7,675,138 | 5,874,768 | 8,946,419 | 9,226,390 | 8,424,945 | 8,922,266 |
| 7,530,500 | 8,149,874 | 7,308,463 | 8,463,015 | 8,983,379 | 8,348,743 | 9,010,868 |
| 6,909,983 | 7,835,630 | 7,351,983 | 8,179,243 | 8,717,677 | 8,685,916 | 8,711,959 |
| 6,986,612 | 7,431,250 | 6,612,286 | 8,228,940 | 8,062,129 | 8,498,625 | 8,516,664 |
| 7,022,267 | 7,375,544 | 6,840,757 | 8,313,089 | 7,982,247 | 8,465,679 | 8,494,334 |
| 6,886,021 | 6,768,028 | 6,518,833 | 7,922,321 | 7,964,254 | 7,897,957 | 8,316,370 |
| 6,674,164 | 6,480,809 | 6,488,055 | 7,751,060 | 7,574,444 | 7,694,624 | 8,030,101 |
| 6,326,069 | 6,787,804 | 5,891,824 | 7,115,583 | 7,248,418 | 7,190,995 | 7,396,693 |
| 5,780,712 | 6,197,025 | 5,842,495 | 7,000,141 | 7,054,259 | 7,050,356 | 7,243,874 |

98,463,817  
100,688,460  
97,964,390  
94,161,019  
94,642,466  
89,624,272  
87,817,948  
83,529,741  
80,008,842

Annual Passenger Trips FY2007-2008

|         | <u>Fairfax Connector</u> | <u>Omni Ride</u> | <u>Omni Link</u> | <u>Virginia Railway Express (VRE)</u> | <u>Alexandria DASH</u> | <u>City of Fairfax CUE</u> | <u>Arlington Transit (ART)</u> | <u>Loudoun County Transit</u> | <u>Metrobus (Northern Virginia)</u> | <u>Metrorail (Northern Virginia)</u> | <u>Total</u> |
|---------|--------------------------|------------------|------------------|---------------------------------------|------------------------|----------------------------|--------------------------------|-------------------------------|-------------------------------------|--------------------------------------|--------------|
| FY 2007 | 9,717,392                | 1,738,556        | 944,917          | 3,453,561                             | 3,743,449              | 1,135,758                  | 1,060,441                      | 652,347                       | 21,011,434                          | 94,161,091                           | 137,618,946  |
| FY 2008 | 9,810,228                | 1,840,722        | 1,008,626        | 3,628,563                             | 3,978,773              | 1,047,346                  | 1,225,427                      | 777,273                       | 20,870,898                          | 97,964,390                           | 142,152,246  |
| %Change | 1%                       | 6%               | 7%               | 5%                                    | 6%                     | -8%                        | 16%                            | 19%                           | -1%                                 | 4%                                   | 3%           |

Note: For the City of Fairfax CUE bus, electronic registering fareboxes were used to track passenger trips starting in FY 2008. FY 2007 trips were derived from an estimate based on an alternative sampling plan. The sampling plan produces estimates within +/-10%. This may account for the negative change in trips.

A discrepancy in September, 2007 Mebtobus ridership is being investigated.

|            | FY 1996    | FY 1997    | FY 1998    | FY 1999    | FY 2000    | FY 2001    | FY 2002    |
|------------|------------|------------|------------|------------|------------|------------|------------|
| Passengers | 63,221,553 | 58,232,000 | 62,263,000 | 69,271,914 | 71,811,902 | 83,052,002 | 80,008,842 |

23092440

| FY 2003    | FY 2004    | FY 2005    | FY 2006    | FY 2007    | FY 2008    | FY 2009     | FY 2010    |
|------------|------------|------------|------------|------------|------------|-------------|------------|
| 83,529,741 | 87,817,948 | 89,624,272 | 94,642,466 | 94,161,019 | 97,985,696 | 101,183,949 | 98,463,817 |

|                    | July    | August  | September | October | November | December | January |
|--------------------|---------|---------|-----------|---------|----------|----------|---------|
| FY 2010 P:         | 342,930 | 326,594 | 338,791   | 345,883 | 302,371  | 306,319  | 332,868 |
| FY 2009 P:         | 338,591 | 319,222 | 340,516   | 352,652 | 268,071  | 267,618  | 289,997 |
| FY 2008 Passengers |         |         |           |         |          |          |         |
| FY 2007 P:         | 272,934 | 307,941 | 273,658   | 300,993 | 272,084  | 252,720  | 304,175 |
| FY 2006 P:         | 305,628 | 329,201 | 314,748   | 299,471 | 289,174  | 273,205  | 295,493 |
| FY 2005 P:         | 316,050 | 326,744 | 320,124   | 318,213 | 310,575  | 296,077  | 291,403 |
| FY 2004 P:         | 304,216 | 281,568 | 301,875   | 321,464 | 272,579  | 294,168  | 283,491 |
| FY 2003 P:         | 253,680 | 255,236 | 251,978   | 272,313 | 236,150  | 232,025  | 279,590 |
| FY 2002 P:         | 268,456 | 235,740 | 243,642   | 265,232 | 277,403  | 243,940  | 233,838 |

| February | March   | April   | May     | June    |           |
|----------|---------|---------|---------|---------|-----------|
| 245,765  | 400,309 | 372,232 | 341,086 | 378,082 | 4,033,230 |
| 303,116  | 331,002 | 343,696 | 309,040 | 348,826 | 3,812,347 |
| 263,128  | 309,310 | 288,227 | 310,046 | 298,345 | 3,453,561 |
| 286,416  | 340,657 | 287,905 | 322,490 | 294,720 | 3,639,108 |
| 287,470  | 351,670 | 317,982 | 324,996 | 339,922 |           |
| 289,332  | 347,185 | 324,390 | 299,500 | 325,666 |           |
| 231,501  | 286,998 | 297,914 | 283,232 | 286,275 |           |
| 230,736  | 258,980 | 259,325 | 252,758 | 217,938 |           |

Passengers

|         |           |
|---------|-----------|
| FY 1994 | 1,798,406 |
| FY 1995 | 1,840,140 |
| FY 1996 | 1,891,913 |
| FY 1997 | 1,754,859 |
| FY 1998 | 1,501,915 |
| FY 1999 | 1,739,792 |
| FY 2000 | 2,039,709 |
| FY 2001 | 2,428,533 |
| FY 2002 | 2,735,025 |
| FY 2003 | 3,179,957 |
| FY 2004 | 3,447,971 |
| FY 2005 | 3,745,382 |
| FY 2006 | 3,639,108 |
| FY 2007 | 3,453,561 |
| FY 2008 | 3,583,534 |
| FY 2009 | 3,868,035 |
| FY 2010 | 4,106,589 |

|        | Weekdays | Avg. Trips | Est. Monthly | Saturdays | Avg. Trips | Est. Monthly |
|--------|----------|------------|--------------|-----------|------------|--------------|
| Jul-01 | 22       | 80574      | 1,772,628    | 4         | 32228      | 128,912      |
| Aug-01 | 23       | 79274      | 1,823,302    | 4         | 32417      | 129,668      |
| Sep-01 | 20       | 77580      | 1,551,600    | 5         | 31039      | 155,195      |
| Oct-01 | 23       | 78230      | 1,799,290    | 4         | 28081      | 112,324      |
| Nov-01 | 22       | 76000      | 1,672,000    | 4         | 28956      | 115,824      |
| Dec-01 | 21       | 66713      | 1,400,973    | 5         | 28051      | 140,255      |
| Jan-02 | 23       | 68312      | 1,571,176    | 4         | 21377      | 85,508       |
| Feb-02 | 20       | 72638      | 1,452,760    | 4         | 26051      | 104,204      |
| Mar-02 | 21       | 70522      | 1,480,962    | 5         | 25288      | 126,440      |
| Apr-02 | 22       | 72976      | 1,605,472    | 4         | 25587      | 102,348      |
| May-02 | 23       | 75844      | 1,744,412    | 4         | 29308      | 117,232      |
| Jun-02 | 20       | 77445      | 1,548,900    | 5         | 28874      | 144,370      |
|        | 260      |            |              | 52        |            |              |
|        |          |            | 19,423,475   |           |            | 1,462,280    |

TOTAL ANNUAL NoVA Metrobus Boardings 21,781,277

Metrobus Monthly

|            | July      | August    | September | October   | November  | December  |
|------------|-----------|-----------|-----------|-----------|-----------|-----------|
| FY 2005 P: | 1,631,357 | 1,556,931 | 1,747,335 | 1,621,974 | 1,625,373 | 1,504,087 |
| FY 2006 P: | 1,705,962 | 1,793,060 | 1,825,681 | 1,738,199 | 1,754,612 | 1,583,259 |
| FY 2007 P: | 1,724,082 | 1,935,477 | 1,757,025 | 1,825,007 | 1,635,303 | 1,644,028 |
| FY 2008 P: | 1,756,572 | 1,919,624 | 1,607,538 | 1,993,728 | 1,800,953 | 1,618,169 |
| FY 2009 P: | 2,001,532 | 1,997,314 | 2,009,997 | 2,054,820 | 1,611,106 | 1,760,237 |
| FY 2010 P: | 1,889,137 | 1,863,762 | 1,848,888 | 1,807,933 | 1,591,935 | 1,486,209 |
| FY 2004 P: | 1,720,452 | 1,647,670 | 1,623,058 | 1,658,600 | 1,521,296 | 1,513,487 |
| FY 2003 P: | 1,901,513 | 1,841,941 | 1,893,780 | 1,961,089 | 1,676,512 | 1,578,677 |
| FY 2002 P: | 1,996,605 | 2,027,738 | 1,805,940 | 1,979,878 | 1,855,824 | 1,631,603 |

| Sundays | Avg. Trips | Est. Monthly |         | Total Est. Monthly |
|---------|------------|--------------|---------|--------------------|
|         | 5          | 19013        | 95,065  | Jul-01 1,996,605   |
|         | 4          | 18692        | 74,768  | Aug-01 2,027,738   |
|         | 5          | 19829        | 99,145  | Sep-01 1,805,940   |
|         | 4          | 17066        | 68,264  | Oct-01 1,979,878   |
|         | 4          | 17000        | 68,000  | Nov-01 1,855,824   |
|         | 5          | 18075        | 90,375  | Dec-01 1,631,603   |
|         | 4          | 13124        | 52,496  | Jan-02 1,709,180   |
|         | 4          | 15204        | 60,816  | Feb-02 1,617,780   |
|         | 5          | 14782        | 73,910  | Mar-02 1,681,312   |
|         | 4          | 15231        | 60,924  | Apr-02 1,768,744   |
|         | 4          | 16941        | 67,764  | May-02 1,929,408   |
|         | 5          | 16799        | 83,995  | Jun-02 1,777,265   |
| 53      |            |              | 895,522 |                    |

| January   | February  | March     | April     | May       | June      |            |
|-----------|-----------|-----------|-----------|-----------|-----------|------------|
| 1,442,607 | 1,472,287 | 1,724,440 | 1,694,613 | 1,754,755 | 1,738,101 |            |
| 1,696,880 | 1,533,188 | 1,830,518 | 1,706,527 | 1,881,208 | 1,849,986 |            |
| 1,688,035 | 1,500,472 | 1,870,964 | 1,787,375 | 1,898,032 | 1,745,634 |            |
| 1,859,657 | 1,731,490 | 1,768,122 | 1,863,016 | 1,944,569 | 1,771,658 |            |
| 1,607,519 | 1,676,972 | 1,936,650 | 1,966,113 | 1,838,106 | 1,992,483 |            |
| 1,599,826 | 1,225,503 | 1,846,949 | 1,832,207 | 1,763,950 | 1,799,795 |            |
| 1,490,355 | 1,467,116 | 1,734,175 | 1,615,634 | 1,541,286 | 1,657,779 | 19,190,908 |
| 1,767,585 | 1,495,704 | 1,768,525 | 1,659,792 | 1,695,493 | 1,645,887 | 21,781,277 |
| 1,709,180 | 1,617,780 | 1,681,312 | 1,768,744 | 1,929,408 | 1,777,265 |            |

---

Data From "Va FY04 Weekend.xls"

|            | <b>FY 1996</b> | <b>FY 1997</b> | <b>FY 1998</b> | <b>FY 1999</b> | <b>FY 2000</b> | <b>FY 2001</b> | <b>FY 2002</b> |
|------------|----------------|----------------|----------------|----------------|----------------|----------------|----------------|
| Passengers | 17,170,478     | 17,694,000     | 17,014,000     | 23,333,815     | 23,092,440     | 21,335,668     | 21,781,277     |

23092440

| <b>FY 2003</b> | <b>FY 2004</b> | <b>FY 2005</b> | <b>FY 2006</b> | <b>FY 2007</b> | <b>FY 2008</b> | <b>FY 2009</b> | <b>FY 2010</b> |
|----------------|----------------|----------------|----------------|----------------|----------------|----------------|----------------|
| 20,886,498     | 19,190,908     | 19,314,871     | 20,899,080     | 21,011,434     | 21,574,431     | 22,125,429     | 20,556,094     |

Passenger Trips

|         |        |
|---------|--------|
| FY 2003 | 26,600 |
| FY 2004 | 74,376 |
| FY 2005 | 68,135 |
| FY 2006 | 78,511 |
| FY 2007 | 67,770 |
| FY 2008 | 69,983 |
| FY 2009 | 71,630 |

Passenger Trips

|         |           |
|---------|-----------|
| FY 1994 | 104,973   |
| FY 1995 | 109,196   |
| FY 1996 | 104,351   |
| FY 1997 | 101,467   |
| FY 1998 | 87,857    |
| FY 1999 | 92,779    |
| FY 2000 | 177,151   |
| FY 2001 | 148,293   |
| FY 2002 | 251,869   |
| FY 2003 | 397,001   |
| FY 2004 | 674,806   |
| FY 2005 | 788,854   |
| FY 2006 | 926,574   |
| FY 2007 | 1,060,441 |
| FY 2008 | 1,225,427 |
| FY 2009 | 1,428,827 |
| FY 2010 | 1,990,402 |

**CUE Bus**

|     | <b>FY94</b> | <b>FY95</b> | <b>FY96</b> | <b>FY97</b> | <b>FY98</b> | <b>FY99</b> | <b>FY 00</b> |
|-----|-------------|-------------|-------------|-------------|-------------|-------------|--------------|
| Jul |             |             |             |             | 74,584      | 93,511      | 77637        |
| Aug |             |             |             |             | 107,546     | 78,146      | 89879        |
| Sep |             |             |             |             | 59,645      | 54,880      | 69588        |
| Oct |             |             |             |             | 76,841      | 77,964      | 90109        |
| Nov |             |             |             |             | 76,282      | 79,110      | 76810        |
| Dec |             |             |             |             | 58,990      | 69,232      | 91302        |
| Jan |             |             |             |             | 53,821      | 75,048      | 73190        |
| Feb |             |             |             |             | 63,066      | 81,381      | 63519        |
| Mar |             |             |             |             | 74,781      | 72,514      | 89950        |
| Apr |             |             |             |             | 71,873      | 77,942      | 71191        |
| May |             |             |             |             | 81,936      | 81,671      | 68004        |
| Jun |             |             |             |             | 75,621      | 59,303      | 78267        |
|     | 818,000     | 858,000     | 858,000     | 890,000     | 874,986     | 900,702     | 939446       |

Passenger  
Trips

|                |           |
|----------------|-----------|
| <b>FY 1994</b> | 818,000   |
| <b>FY 1995</b> | 858,000   |
| <b>FY 1996</b> | 858,000   |
| <b>FY 1997</b> | 890,000   |
| <b>FY 1998</b> | 874,986   |
| <b>FY 1999</b> | 939,446   |
| <b>FY 2000</b> | 980,587   |
| <b>FY 2001</b> | 970,576   |
| <b>FY 2002</b> | 919,877   |
| <b>FY 2003</b> | 925,000   |
| <b>FY 2004</b> | 985,500   |
| <b>FY 2005</b> | 1,068,492 |
| <b>FY 2006</b> | 1,093,926 |
| <b>FY 2007</b> | 1,135,758 |
| <b>FY 2008</b> | 1,047,346 |
| <b>FY 2009</b> | 1,031,659 |
| <b>FY 2010</b> | 932,055   |

Passenger Trips

|         |           |
|---------|-----------|
| FY 1984 | 195,916   |
| FY 1985 | 923,504   |
| FY 1986 | 1,176,091 |
| FY 1987 | 1,174,597 |
| FY 1988 | 1,174,470 |
| FY 1989 | 1,292,787 |
| FY 1990 | 1,352,503 |
| FY 1991 | 1,405,662 |
| FY 1992 | 1,533,932 |
| FY 1993 | 1,985,422 |
| FY 1994 | 2,195,738 |
| FY 1995 | 2,238,266 |
| FY 1996 | 2,235,647 |
| FY 1997 | 2,241,739 |
| FY 1998 | 2,293,493 |
| FY 1999 | 2,406,609 |
| FY 2000 | 2,521,925 |
| FY 2001 | 2,640,420 |
| FY 2002 | 2,736,719 |
| FY 2003 | 2,986,631 |
| FY 2004 | 3,131,284 |
| FY 2005 | 3,323,021 |
| FY 2006 | 3,556,486 |
| FY 2007 | 3,743,499 |
| FY 2008 | 3,978,773 |
| FY 2009 | 4,006,825 |
| FY 2010 | 3,805,551 |

|                        | <b>July</b> | <b>August</b> | <b>September</b> | <b>October</b> | <b>November</b> | <b>December</b> | <b>January</b> | <b>February</b> |
|------------------------|-------------|---------------|------------------|----------------|-----------------|-----------------|----------------|-----------------|
| FY 2001 P:             | 224,113     | 239,228       | 220,469          | 230,355        | 207,407         | 190,615         | 208,359        | 201,408         |
| FY 2002 P:             | 249,796     | 258,638       | 226,168          | 245,892        | 211,788         | 195,603         | 210,053        | 201,587         |
| FY 2003 P:             | 272,824     | 278,506       | 259,425          | 263,601        | 229,962         | 224,511         | 228,051        | 201,585         |
| FY 2004 P:             | 277,212     | 267,994       | 254,062          | 280,522        | 235,700         | 238,852         | 227,821        | 238,355         |
| FY 2005 P:             | 287,367     | 281,671       | 284,104          | 279,197        | 261,103         | 257,466         | 244,721        | 245,607         |
| FY 2006 P:             | 297,384     | 323,667       | 316,023          | 300,412        | 282,822         | 271,727         | 272,724        | 259,251         |
| FY 2007 P:             | 323,436     | 345,623       | 311,388          | 317,026        | 292,200         | 275,231         | 287,197        | 262,759         |
| Avg. Weekday Boardings |             |               |                  |                |                 |                 |                |                 |
| 2002                   | 10016       | 9860          | 9727             | 9478           | 9008            | 8400            | 8704           | 9183            |
| 2001                   | 9582        | 9337          | 9421             | 9486           | 8810            | 8192            | 8746           | 9183            |

| <b>March</b> | <b>April</b> | <b>May</b> | <b>June</b> |
|--------------|--------------|------------|-------------|
| 220,613      | 211,180      | 232,588    | 243,834     |
| 219,269      | 232,948      | 240,635    | 244,342     |
| 252,026      | 257,444      | 257,861    | 260,835     |
| 284,169      | 270,943      | 269,616    | 286,038     |
| 289,930      | 291,708      | 293,307    | 306,840     |
| 308,958      | 288,667      | 316,501    | 318,350     |
| 320,904      | 315,529      | 344,392    | 347,814     |
| 8838         | 9306         | 9464       | 9976        |
| 9032         | 9074         | 9286       | 9909        |

9067

Passenger Trips

|         |           |
|---------|-----------|
| FY 1994 | 2,877,022 |
| FY 1995 | 4,395,572 |
| FY 1996 | 4,512,323 |
| FY 1997 | 4,456,103 |
| FY 1998 | 4,724,428 |
| FY 1999 | 4,773,876 |
| FY 2000 | 5,586,461 |
| FY 2001 | 6,110,611 |
| FY 2002 | 6,831,313 |
| FY 2003 | 7,595,138 |
| FY 2004 | 7,990,825 |
| FY 2005 | 8,474,143 |
| FY 2006 | 9,529,056 |
| FY 2007 | 9,717,392 |
| FY 2008 | 9,810,228 |
| FY 2009 | 9,576,635 |
| FY 2010 | 9,643,793 |

Passenger Trips

|         |         |
|---------|---------|
| FY 1995 | 44,873  |
| FY 1996 | 81,064  |
| FY 1997 | 118,047 |
| FY 1998 | 142,387 |
| FY 1999 | 163,294 |
| FY 2000 | 172,923 |
| FY 2001 | 182,508 |
| FY 2002 | 212,102 |
| FY 2003 | 281,829 |
| FY 2004 | 392,901 |
| FY 2005 | 513,766 |
| FY 2006 | 602,333 |
| FY 2007 | 652,347 |
| FY 2008 | 777,273 |
| FY 2009 | 890,011 |
| FY 2010 | 967,957 |

**Passenger  
Trips**

|                |           |
|----------------|-----------|
| <b>FY 1994</b> | 703,743   |
| <b>FY 1995</b> | 736,645   |
| <b>FY 1996</b> | 686,489   |
| <b>FY 1997</b> | 620,223   |
| <b>FY 1998</b> | 586,760   |
| <b>FY 1999</b> | 612,029   |
| <b>FY 2000</b> | 612,962   |
| <b>FY 2001</b> | 806,542   |
| <b>FY 2002</b> | 938,778   |
| <b>FY 2003</b> | 1,182,996 |
| <b>FY 2004</b> | 1,251,316 |
| <b>FY 2005</b> | 1,392,432 |
| <b>FY 2006</b> | 1,608,583 |
| <b>FY 2007</b> | 1,738,556 |
| <b>FY 2008</b> | 1,840,716 |
| <b>FY 2009</b> | 2,146,441 |
| <b>FY 2010</b> | 2,176,322 |

**Passenger  
r  
Trips**

|                |           |
|----------------|-----------|
| <b>FY 1995</b> | 17,804    |
| <b>FY 1996</b> | 156,173   |
| <b>FY 1997</b> | 265,698   |
| <b>FY 1998</b> | 295,082   |
| <b>FY 1999</b> | 305,423   |
| <b>FY 2000</b> | 341,175   |
| <b>FY 2001</b> | 465,379   |
| <b>FY 2002</b> | 590,182   |
| <b>FY 2003</b> | 649,405   |
| <b>FY 2004</b> | 604,586   |
| <b>FY 2005</b> | 694,366   |
| <b>FY 2006</b> | 843,407   |
| <b>FY 2007</b> | 870,206   |
| <b>FY 2008</b> | 1,008,626 |
| <b>FY 2009</b> | 1,025,633 |
| <b>FY 2010</b> | 1,000,027 |

**Figure 3: Fares on Northern Virginia Transit Systems**

| Rail Systems           | Minimum Fare | Maximum Fare | Senior       | Disabled     | Under 21     |
|------------------------|--------------|--------------|--------------|--------------|--------------|
| VRE                    | \$2.90       | \$10.30      | 50% discount | 50% discount | 50% discount |
| Metrorail Regular Fare | \$1.65       | \$4.50       | \$0.80       | \$0.80       | NA           |
| Metrorail Reduced Fare | \$1.35       | \$2.35       | \$0.80       | \$0.80       | NA           |

Metrorail regular fares are charged between 5:30 and 9:30am and 3:00 to 7:00pm weekdays. Reduced fares are charged at all other times.

| Bus Systems                                       | Base Fare   | Student | Senior | Disabled | Metrorail transfer |
|---|-------------|---------|--------|----------|--------------------|
| ART (cash fare)                                   | \$1.35      | \$0.60  | \$0.60 | \$0.60   | \$1.35             |
| ART (SmartTrip)                                   | \$1.25      | \$0.60  | \$0.60 | \$0.60   | \$0.75             |
| ART Lunch Loops                                   | <i>FREE</i> |         |        |          |                    |
| Connector (cash fare)                             | \$1.35      |         | \$0.60 | \$0.60   | \$1.35             |
| Connector (SmartTrip)                             | \$1.25      |         | \$0.60 | \$0.60   | \$0.85             |
| Connector Express 595 & 597                       | \$7.00      |         | \$0.60 | \$0.60   | \$7.00             |
| Connector Express 380                             | \$5.00      |         | \$0.60 | \$0.60   | \$4.50             |
| CUE (City of Fairfax) (cash)                      | \$1.35      | \$0.65  | \$0.65 | \$0.65   |                    |
| CUE (City of Fairfax) (SmartTrip)                 | \$1.25      | \$0.65  | \$0.65 | \$0.65   |                    |
| DASH (City of Alexandria)                         | \$1.25      |         | \$1.25 | \$1.25   | \$1.25             |
| GEORGE (City of Falls Church)                     | \$1.00      |         | \$1.00 | \$1.00   | \$1.00             |
| Loudoun County Transit to Arlington and DC        | \$8.00      |         |        |          |                    |
| Loudoun County Transit to West Falls Church Metro | \$2.25      |         |        |          |                    |
| Metrobus (cash fare)                              | \$1.35      |         | \$0.60 | \$0.60   | \$0.35             |
| Metrobus (SmartTrip fare)                         | \$1.25      |         | \$0.60 | \$0.60   | \$0.35             |
| Metrobus Express (cash fare)                      | \$3.10      |         | \$0.60 | \$0.60   |                    |
| Metrobus Express (SmartTrip)                      | \$3.00      |         | \$0.60 | \$0.60   |                    |
| OMNILink (PRTC)                                   | \$1.10      |         | \$1.10 | \$1.10   |                    |
| OMNIRide (PRTC) (cash fare)                       | \$6.50      |         | \$3.25 | \$1.10   |                    |
| OMNIRide (PRTC) (SmartTrip)                       | \$4.75      |         | \$3.25 | \$3.25   |                    |
| OMNIRide MetroDirect (PRTC) (cash)                | \$3.00      |         | \$1.50 | \$1.50   |                    |
| OMNIRide MetroDirect (PRTC) (SmartTrip)           | \$2.40      |         | \$1.50 | \$1.50   |                    |

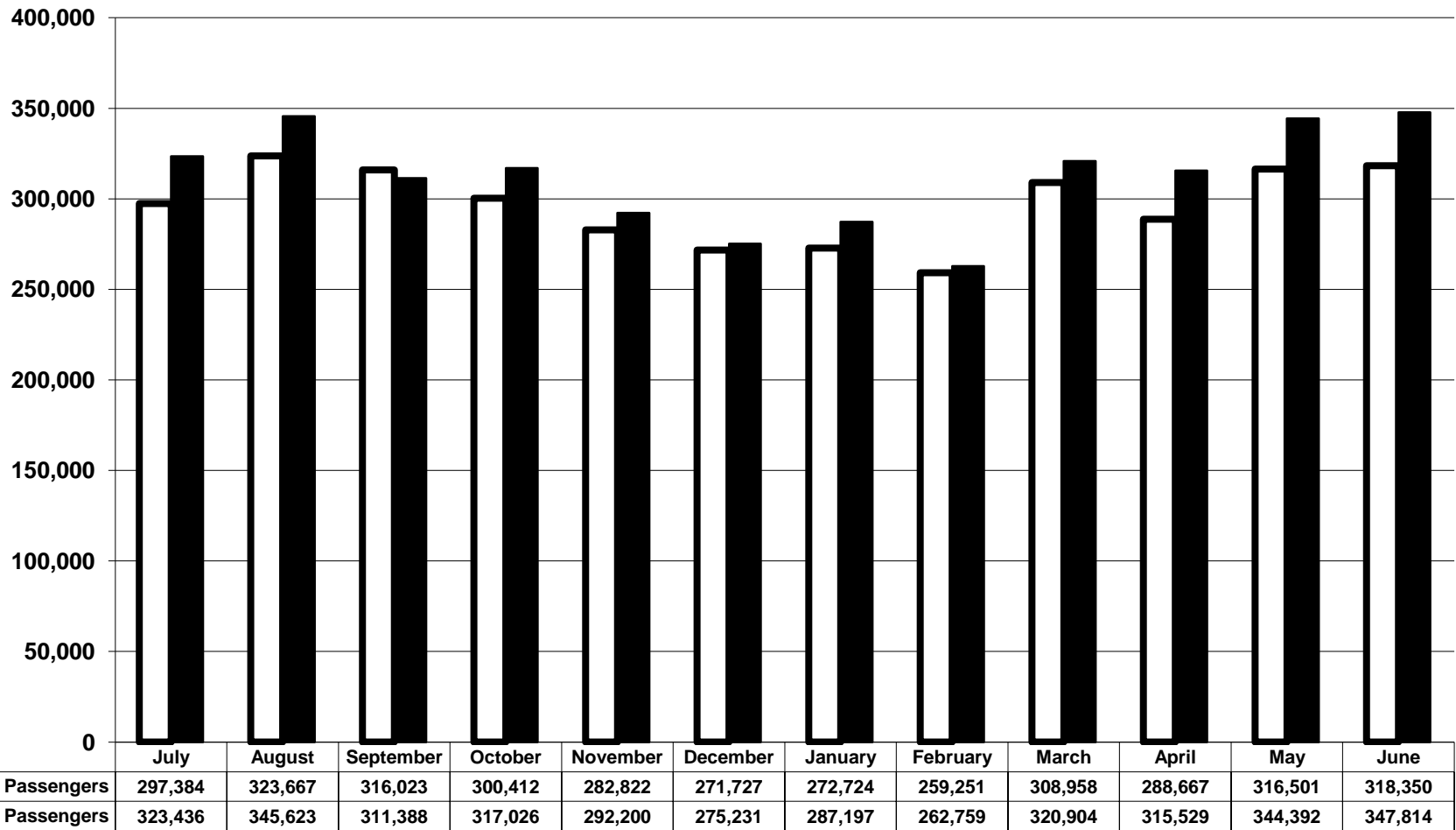
**Figure 11: VRE Average Daily and Annual Passenger Trips by Station and Line FY 2006**

| <b>Fredericksburg Line</b> |                                      |                                       |
|----------------------------|--------------------------------------|---------------------------------------|
| <b>Station</b>             | <b>Average Daily Passenger Trips</b> | <b>Average Annual Passenger Trips</b> |
| Fredericksburg             | 1,074                                | 280,211                               |
| Leeland                    | 673                                  | 175,656                               |
| Brook                      | 351                                  | 91,641                                |
| Quantico                   | 299                                  | 77,893                                |
| Rippon                     | 454                                  | 118,326                               |
| Woodbridge                 | 557                                  | 145,230                               |
| Lorton                     | 274                                  | 71,500                                |
| Franconia                  | 210                                  | 54,737                                |
| Alexandria                 | 509                                  | 132,741                               |
| Crystal City               | 1,170                                | 1,015,194                             |
| L'enfant                   | 1,276                                | 332,971                               |
| Union Station              | 761                                  | 198,597                               |
| <b>TOTAL</b>               | <b>7,608</b>                         | <b>1,984,874</b>                      |

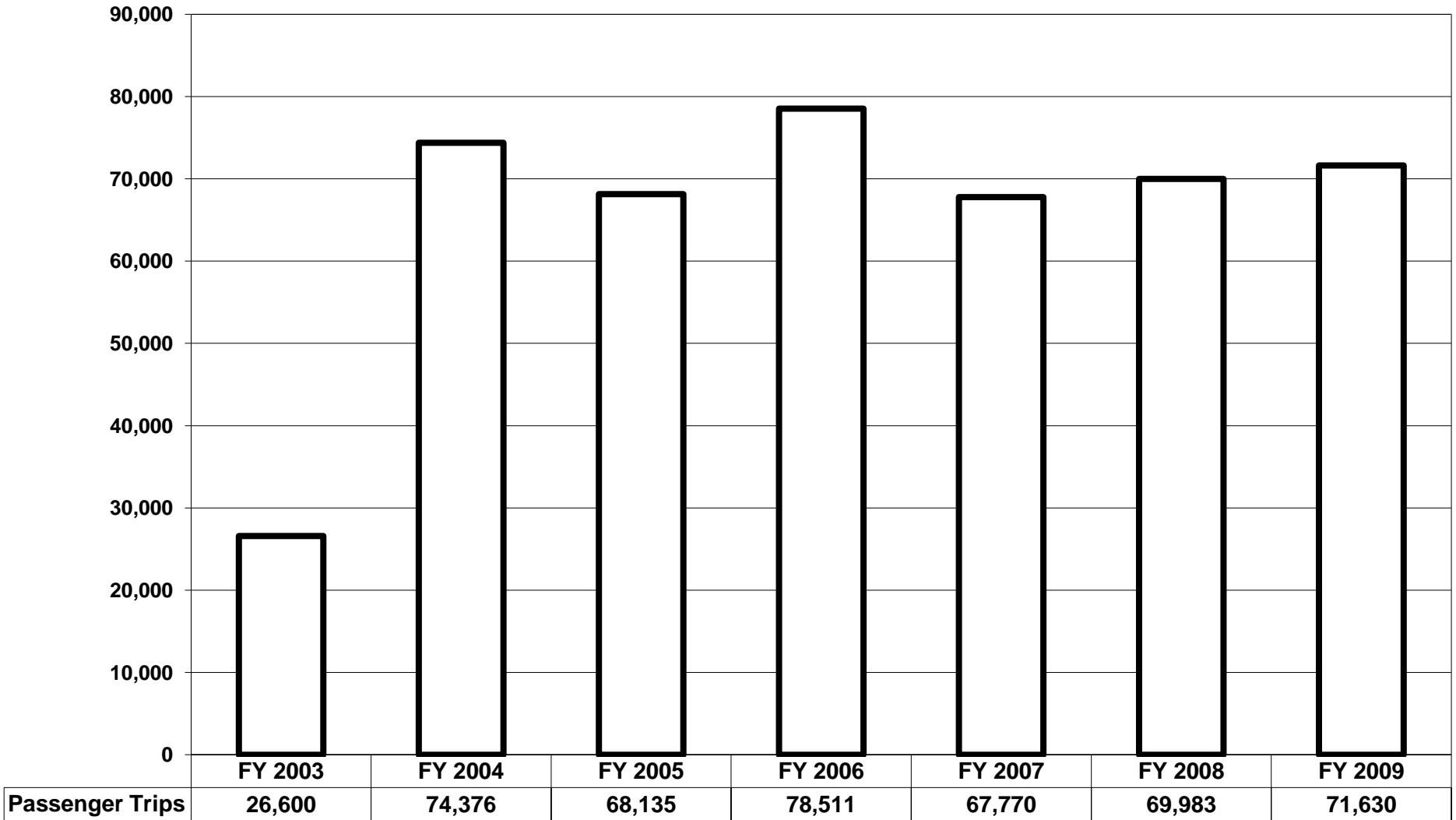
| <b>Manassas Line</b> |                                      |                                       |
|----------------------|--------------------------------------|---------------------------------------|
| <b>Station</b>       | <b>Average Daily Passenger Trips</b> | <b>Average Annual Passenger Trips</b> |
| Broad Run            | 974                                  | 254,222                               |
| Manassas             | 563                                  | 147,138                               |
| Manassas Park        | 668                                  | 174,178                               |
| Burke Center         | 708                                  | 184,838                               |
| Rolling Road         | 452                                  | 117,901                               |
| Backlick Road        | 196                                  | 51,068                                |
| Alexandria           | 236                                  | 61,425                                |
| Crystal City         | 805                                  | 209,855                               |
| L'enfant             | 1,560                                | 406,915                               |
| Union Station        | 865                                  | 225,688                               |
| <b>TOTAL</b>         | <b>7,027</b>                         | <b>1,833,227</b>                      |

**Figure 23: DASH Monthly Passenger Trips, FY 2006 - FY 2007**



FY 2006 Passengers
 
 FY 2007 Passengers

**Figure 19: GEORGE Annual Passenger Trips, FY 2003-2009**



(note: GEORGE service began in January of 2003, GEORGE ridership included in WMATA ridership figures for Northern Virginia)